

HOME COLLECTION

2021



AUDIO SOLUTIONS
HANDCRAFTED IN FRANCE

For more than four decades, Focal has created speaker drivers and high-end loudspeakers that deliver a unique sound. Our brand values are innovation and performance; excellence and pleasure. We are globally renowned for our exclusive technologies. The result of this technological heritage is class-leading products offering a natural, authentic performance, imbued with clarity and power. With our collection of acoustic loudspeakers, we bring you excellent listening quality, both in stereo and Home Cinema set ups, through solutions with an exceptional design.



Shop No.9 , Millenium Star, Dhole Patil Road, Pune - 411001
Landline (20)-41289520 Mobile : (+91) 9607929864/66/68



01.
UTOPIA

7

02.
SOPRA

17



03.
KANTA

23



04.
ARIA

29

05.
CHORA

35



06.
SUBWOOFERS

41

07.
ASTRAL 16

45



01. UTOPIA

The legend continues

The embodiment of Focal excellence, the Utopia III Evo line is distinguished by its incredible silhouette, cutting-edge, exclusive technology, finishes inspired by the luxury car industry and, of course, the unrivalled listening experience they deliver. They are also home to the best components of their generation, like their cabling that is manufactured in France. Utopia is an icon, and still streets ahead of the rest.



Shop No.9 , Millenium Star, Dhole Patil Road, Pune - 411001
Landline (20)-41289520 Mobile : (+91) 9607929864/66/68

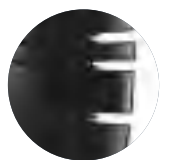




'W' sandwich cone



Pure Beryllium tweeter



Focus Time



Large laminar vent



Power Flower™ technology



TMD® surround



Shop No.9 , Millenium Star, Dhole Patil Road, Pune - 411001
Landline (20)-41289520 Mobile : (+91) 9607929864/66/68



GRANDE UTOPIA EM EVO

The ultimate sound

Grande Utopia has left an indelible mark with each generation; it is Focal's most successful concept. With its exceptional performance and unique style, it is no longer simply a monument to technology, it is also a sound sculpture. Each speaker driver is housed inside a separate box. These boxes make up the spectacular spinal column of the loudspeaker and can be tilted by a dedicated handle. This adjustable 'Focus Time' function means you can achieve an absolutely perfect sound image based on the configuration of your room.

HANDCRAFTED
IN FRANCE



Shop No.9 , Millenium Star, Dhole Patil Road, Pune - 411001
Landline (20)-41289520 Mobile : (+91) 9607929864/66/68





GRANDE UTOPIA EM EVO

STELLA UTOPIA EM EVO

Type	4-way bass-reflex floorstanding loudspeaker	3-way bass-reflex floorstanding loudspeaker
Drivers	<ul style="list-style-type: none"> • Electro-Magnetic 16" (40cm) 'W' Woofer • Multiferrite 11" (27cm) 'W' Low-Mid Woofer • 2 x 6½" (16.5cm) 'W' Midrange Power Flower™ with TMD® suspension and NIC motor • 1" (27mm) IAL2 pure Beryllium inverted dome tweeter 	<ul style="list-style-type: none"> • Electro-Magnetic 13" (33cm) 'W' Woofer • 2 x 6½" (16.5cm) 'W' Midrange Power Flower™ with TMD® suspension and NIC motor • 1" (27mm) IAL2 pure Beryllium inverted dome tweeter
Frequency response	18Hz - 40kHz	22Hz - 40kHz
Low frequency point (-6dB)	14Hz	18Hz
Crossover frequency	80 / 220 / 2,300Hz	230 / 2,200Hz
Sensitivity (2.83V/1 m)	94dB	94dB
Nominal impedance	8Ω (min 3Ω)	8Ω (min 2.8Ω)
Recommended amplifier power	50 - 1,500W	50 - 1,000W
Dimensions (HxWxD)	77½ x 25¾ x 34½" (201 x 65.4 x 88cm)	61¾ x 21¼ x 32¾" (155.8 x 55.3 x 83cm)
Net weight (by unit)	584lbs (265kg)	375lbs (170kg)
Finishes		

MAESTRO UTOPIA EVO

SCALA UTOPIA EVO

Type	3-way bass-reflex floorstanding loudspeaker	3-way bass-reflex floorstanding loudspeaker
Drivers	<ul style="list-style-type: none"> • 11" (27cm) 'W' Woofer with a Magnetic Damping System (MDS) • 11" (27cm) 'W' Woofer Power Flower™ • 6½" (16,5cm) 'W' Midrange with TMD® suspension and NIC motor • 1" (27mm) IAL2 pure Beryllium inverted dome tweeter 	<ul style="list-style-type: none"> • 11" (27cm) 'W' Woofer Power Flower™ • 6½" (16,5cm) 'W' Midrange with TMD® suspension and NIC motor • 1" (27mm) IAL2 pure Beryllium inverted dome tweeter
Frequency response	25Hz - 40kHz	27Hz - 40kHz
Low frequency point (-6dB)	21Hz	24Hz
Crossover frequency	280 / 2,200Hz	220 / 2,400Hz
Sensitivity	93dB	92dB
Nominal impedance	8Ω (min 3.1Ω)	8Ω (min 3.2Ω)
Recommended amplifier power	50 - 600W	50 - 500W
Dimensions (HxWxD)	57½ x 17½ x 30¼" (147 x 45.5 x 77cm)	(49½ x 15½ x 26¾") 124.7 x 39.3 x 67cm
Net weight (by unit)	256lbs (116kg)	187lbs (85kg)
Finishes		



Shop No.9 , Millenium Star, Dhole Patil Road, Pune - 411001
Landline (20)-41289520 Mobile : (+91) 9607929864/66/68



**DIABLO UTOPIA
COLOUR EVO**



**VIVA/VIVA CENTER
UTOPIA COLOUR EVO**



**SUB UTOPIA EM
COLOUR EVO**

Type	2-way bass-reflex compact bookshelf loudspeaker	3-way LCR bass-reflex loudspeaker
Drivers	<ul style="list-style-type: none"> • 6½" (16.5cm) 'W' Mid-Bass Power Flower™ • 1" (27mm) IAL2 pure Beryllium inverted dome tweeter 	<ul style="list-style-type: none"> • 2 x 8" (21cm) 'W' Woofers • 6½" (16.5cm) 'W' Midrange Power Flower™ • 1" (27mm) IAL2 pure Beryllium inverted dome tweeter
Frequency response	44Hz - 40kHz	39Hz - 40kHz
Low frequency point (-6dB)	40Hz	34Hz
Crossover frequency	2,200Hz	270Hz / 2,200Hz
Sensitivity (2.83V/1 m)	89dB	92dB
Nominal impedance	8Ω (min 4Ω)	8Ω (min 3.2Ω)
Recommended amplifier power	25 - 200W	50 - 600W
Dimensions (HxWxD)	17 x 10½ x 16¾" (43.1 x 25.8 x 42.7cm)	37½ x 12½ x 20½" (94.2 x 32.2 x 51cm)
Net weight (by unit)	44lbs (20kg)	125lbs (57kg)
Finishes		



**DIABLO UTOPIA
COLOUR EVO STAND**

Height: 24" (60cm)
Graphite Black finish



**VIVA / VIVA CENTER
UTOPIA COLOUR EVO STAND**

Height: 16" (40cm)
Graphite Black finish



02. SOPRA

Revealing the invisible

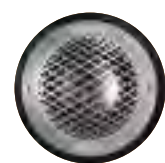
The Sopra range gloriously releases the essence of music: you will feel like you are listening to some sounds for the very first time. In addition to finishes in Carrara White, Black Lacquer and Electric range, Sopra N°1, N°2 and N°3 are also available in Light Oak and Black Oak, the wood having been meticulously crafted by our cabinet-makers in order to bring you unique pieces. Having total mastery over its available space, Sopra is a delight for aesthetes of form and sound.



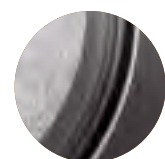
Shop No.9 , Millenium Star, Dhole Patil Road, Pune - 411001
Landline (20)-41289520 Mobile : (+91) 9607929864/66/68



'W' sandwich cone



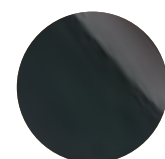
Pure Beryllium IHL tweeter



TMD® surround



NIC technology



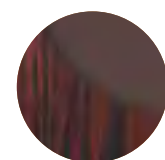
Black Lacquer



Carrara White



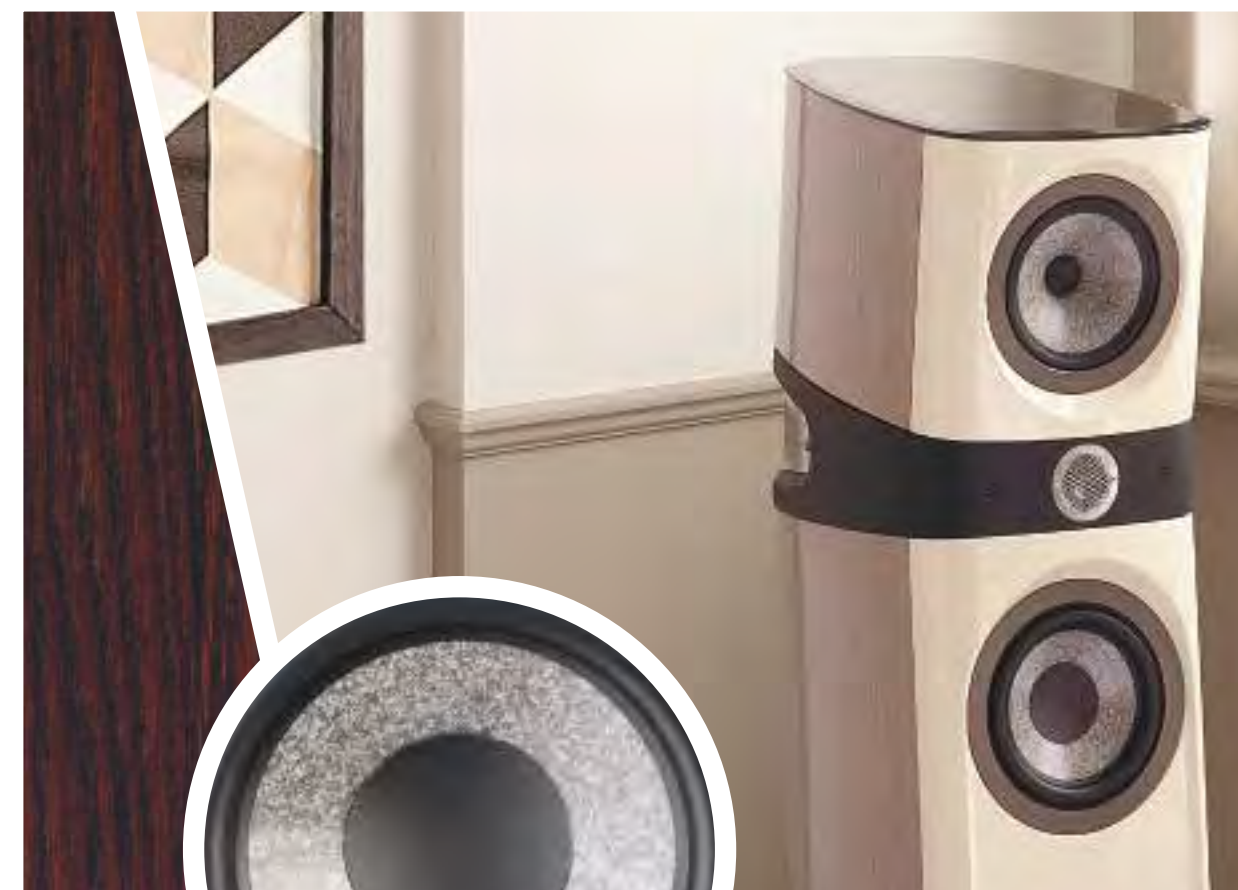
Electric Orange



Black Oak



Light Oak



Shop No.9 , Millenium Star, Dhole Patil Road, Pune - 411001
Landline (20)-41289520 Mobile : (+91) 9607929864/66/68



SOPRA N°3

SOPRA N°2

SOPRA N°1

SOPRA CENTER

SOPRA SURROUND BE

SW 1000 BE

Type	3-way bass-reflex floorstanding loudspeaker	3-way bass-reflex floorstanding loudspeaker	2-way bass-reflex bookshelf loudspeaker
Drivers	<ul style="list-style-type: none"> • 2 x 8" (21cm) 'W' Woofer with NIC motor • 6½" (16.5cm) 'W' Midrange with TMD® suspension and NIC motor • 1" (27mm) IHL pure Beryllium inverted dome tweeter 	<ul style="list-style-type: none"> • 2 x 7" (18cm) 'W' Woofer with NIC motor • 6½" (16.5cm) 'W' Midrange with TMD® suspension and NIC motor • 1" (27mm) IHL pure Beryllium inverted dome tweeter 	<ul style="list-style-type: none"> • 6½" (16.5cm) 'W' Mid-Bass with TMD® suspension and NIC motor • 1" (27mm) IHL pure Beryllium inverted dome tweeter
Frequency response	33Hz - 40kHz	34Hz - 40kHz	45Hz - 40kHz
Low frequency point (-6dB)	26Hz	28Hz	41Hz
Crossover frequency	250Hz / 2,200Hz	250Hz / 2,200Hz	2,200Hz
Sensitivity (2.83V/1 m)	91,5dB	91dB	89dB
Nominal impedance	8Ω (min 3.1Ω)	8Ω (min 3.1Ω)	8Ω (min 3.9Ω)
Recommended amplifier power	40 - 400W	40 - 300W	25 - 150W
Dimensions (HxWxD)	49⅝ x 15¾ x 23⅝" (126.4 x 40.2 x 59.5cm)	46⅞ x 14⅞ x 21¼" (119 x 35.8 x 54cm)	16⅞ x 11 x 15¾" (42.5 x 27.9 x 39.6cm)
Net weight (by unit)	154lbs (70kg)	121lbs (55kg)	42lbs (19kg)
Finishes			

Type	3-way bass-reflex center loudspeaker	2-way sealed bipolar surround loudspeaker
Drivers	<ul style="list-style-type: none"> • 2 x 6½" (16.5cm) 'W' Woofers • 3" (8cm) 'W' Midrange • 1" (27mm) IHL pure Beryllium inverted dome tweeter 	<ul style="list-style-type: none"> • 2 x 6½" (16.5cm) 'W' Mid-Bass • 2 x 1" (27mm) IHL pure Beryllium inverted dome tweeter
Frequency response	55Hz - 40kHz	72Hz - 40kHz
Low frequency point (-6dB)	50Hz	59Hz
Crossover frequency	500Hz / 2,200Hz	2,400Hz
Sensitivity (2.83V/1 m)	91dB	91dB
Nominal impedance	8Ω (min 4.1Ω)	4Ω / 8Ω (min 3Ω / 6Ω (bipole/monopole))
Recommended amplifier power	40 - 200W	40 - 200W
Dimensions (HxWxD)	9¼ x 24 x 13¾" (23.5 x 60.9 x 35cm)	15⅜ x 16⅞ x 7½" (39 x 43 x 19cm)
Net weight (by unit)	121lbs (19kg)	28lbs (13kg)
Finishes		

Subwoofer (see p.40)



SOPRA STAND

Height: 24" (60cm)
Graphite Black finish



03.

KANTA

Performance meets style

Kanta is all about superb performance in an even more tightly controlled space. Precision, detail, warmth and musical sounding are its key sound characteristics. The range also stands out for its modern design and decidedly disruptive aesthetics. The front panels of its four models, in either a lacquered or a matte finish, offer various combination options to cater to all tastes and to suit diverse environments.

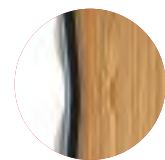


Shop No.9 , Millenium Star, Dhole Patil Road, Pune - 411001
Landline (20)-41289520 Mobile : (+91) 9607929864/66/68





Flax cone



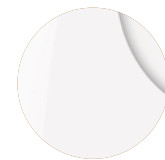
Focus Time



TMD® surround



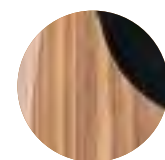
Beryllium tweeter



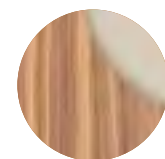
Carrara White



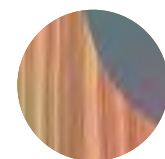
Black Lacquer



Walnut High Gloss & Black Lacquer



Walnut Mate & Ivory



Walnut Mate & Dark Grey



FOCAL | KANTA
— 25 —



Shop No.9 , Millenium Star, Dhole Patil Road, Pune - 411001
Landline (20)-41289520 Mobile : (+91) 9607929864/66/68



KANTA N°3



KANTA N°2



KANTA N°1



KANTA CENTER



SUB 1000 F

Type	3-way bass-reflex floorstanding loudspeaker	3-way bass-reflex floorstanding loudspeaker	2-way bass-reflex bookshelf loudspeaker
Drivers	<ul style="list-style-type: none"> • 2 x 8" (21 cm) Flax bass with NIC motor • 6½" (16.5 cm) Flax Midrange with TMD® suspension and NIC motor • 1" (27mm) IAL3 pure Beryllium inverted dome tweeter 	<ul style="list-style-type: none"> • 2 x 6½" (16.5cm) Flax Woofer with NIC motor • 6½" (16.5cm) Flax Midrange with TMD® suspension and NIC motor • 1" (27mm) IAL3 pure Beryllium inverted dome tweeter 	<ul style="list-style-type: none"> • 6½" (16.5 cm) Flax Mid-Bass with TMD® suspension and NIC motor • 1" (27 mm) IAL3 pure Beryllium inverted dome tweeter
Frequency response	33Hz - 40kHz	35Hz - 40kHz	46Hz - 40kHz
Low frequency point (-6dB)	26Hz	29Hz	42Hz
Crossover frequency	250Hz / 2,500Hz	260Hz / 2,700Hz	2,400Hz
Sensitivity (2.83V/1 m)	91dB	91dB	88dB
Nominal impedance	8Ω (min 3Ω)	8Ω (min 3.1Ω)	8Ω (min 3.9Ω)
Recommended amplifier power	40 - 400W	40 - 300W	25 - 150W
Dimensions (HxWxD)	50¾ x 15¼ x 20½" (128 x 38.6 x 52cm)	44 x 12¾ x 18¾" (111.8 x 32.1 x 47.7cm)	16¾ x 9¼ x 15¾" (42.2 x 23.4 x 39cm)
Net weight (by unit)	101lbs (46kg)	77lbs (35kg)	29lbs (13kg)
Finishes			

Type	2-way bass-reflex center loudspeaker
Drivers	<ul style="list-style-type: none"> • 6½" (16.5 cm) Flax Mid-Bass with TMD® suspension and NIC motor • 1" (27 mm) IAL3 pure Beryllium inverted dome tweeter
Frequency response	55Hz - 40kHz
Low frequency point (-6dB)	50Hz
Crossover frequency	2,400Hz
Sensitivity (2.83V/1 m)	91dB
Nominal impedance	8Ω (min 3.5Ω)
Recommended amplifier power	40 - 200W
Dimensions (HxWxD)	9½ x 22 x 15¾" (24.6 x 56.1 x 39cm)
Net weight (by unit)	40lbs (18kg)
Finishes	

Subwoofer (see p.40)



KANTA N°1 STAND

Adjustable height from 24" to 25" (61,5 to 64,1cm)
Graphite Black finish



KANTA CENTER STAND

Adjustable height from 16.5" to 17.5" (42,4 to 45cm)
Graphite Black finish



04. ARIA

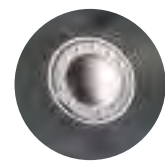
High-Fidelity guaranteed

The harmonic richness of the Aria line is a guarantee of genuine high-fidelity musical sound. Exclusive to Focal, the Flax cone of each speaker driver is a treat for the eyes, as well as the ears. From the cabinet to its natural design, nothing is left to chance - ensuring you will always enjoy an expressive, balanced listening experience.

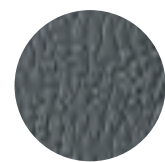




Flax cone



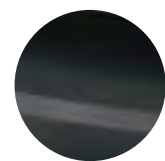
TNF Tweeter



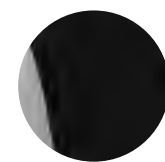
Leather effect front panel



Front port



Aluminium alloy stand



Black High Gloss



Noyer Finish



Shop No.9 , Millenium Star, Dhole Patil Road, Pune - 411001
Landline (20)-41289520 Mobile : (+91) 9607929864/66/68



ARIA 948

ARIA 936

ARIA 926

Type	3-way bass-reflex floorstanding loudspeaker	3-way bass-reflex floorstanding loudspeaker	3-way bass-reflex floorstanding loudspeaker
Drivers	<ul style="list-style-type: none"> • 2 x 8" (21cm) Flax Woofer • 6½" (16.5cm) Flax Midrange • 1" (25mm) TNF Al/Mg inverted dome tweeter 	<ul style="list-style-type: none"> • 3 x 6½" (16.5cm) Flax Woofer • 6½" (16.5cm) Flax Midrange • 1" (25mm) TNF Al/Mg inverted dome tweeter 	<ul style="list-style-type: none"> • 2 x 6½" (16.5cm) Flax bass • 6½" (16.5cm) Flax Midrange • 1" (25mm) TNF Al/Mg inverted dome tweeter
Frequency response	37Hz - 28kHz	39Hz - 28kHz	45Hz - 28kHz
Low frequency point (-6dB)	31Hz	32Hz	37Hz
Crossover frequency	280Hz / 2,600Hz	260Hz / 3,100Hz	290Hz / 2,400Hz
Sensitivity (2.83V/1 m)	92.5dB	92dB	91.5dB
Nominal impedance	8Ω (min 2.5Ω)	8Ω (min 2.8Ω)	8Ω (min 2.9Ω)
Recommended amplifier power	40 - 350W	40 - 300W	40 - 250W
Dimensions (HxWxD)	45¼ x 14¾ x 16⅝" (115 x 37.1 x 42cm)	45¼ x 11⅝ x 14⅝" (115 x 29.4 x 37.1cm)	40¾ x 11⅝ x 14⅝" (103.5 x 29.4 x 37.1cm)
Net weight (by unit)	77lbs (35kg)	64lbs (29kg)	55lbs (25kg)
Finishes			



ARIA 906

ARIA CC 900

ARIA SR 900

Type	2-way bass-reflex bookshelf loudspeaker	2-way bass-reflex center loudspeaker	2-way sealed bipolar surround loudspeaker
Drivers	<ul style="list-style-type: none"> • 6½" (16.5cm) Flax Mid-Bass • 1" (25mm) TNF Al/Mg inverted dome tweeter 	<ul style="list-style-type: none"> • 2 x 6½" (16.5cm) Flax Mid-Bass • 1" (25mm) TNF Al/Mg inverted dome tweeter 	<ul style="list-style-type: none"> • 2 x 5" (13cm) Flax Mid-Bass • 2 x 1" (25mm) TNF Al/Mg inverted dome tweeter
Frequency response	55Hz - 28kHz	57Hz - 28kHz	85Hz - 28Hz
Low frequency point (-6dB)	47Hz	50Hz	67Hz
Crossover frequency	2,800Hz	2,800Hz	2,200Hz
Sensitivity (2.83V/1 m)	89.5dB	91dB	90dB
Nominal impedance	8Ω (min 4.6Ω)	8Ω (min 4.3Ω)	8Ω (min 3.6Ω)
Recommended amplifier power	25 - 120W	40 - 200W	25 - 120W
Dimensions (HxWxD)	15⅝ x 8⅞ x 11" (39 x 22.5 x 28cm)	7⅞ x 21 x 9⅝" (20 x 53.3 x 24.5cm)	11⅝ x 15¼ x 6⅞" (29.5 x 40 x 17cm)
Net weight (by unit)	19lbs (8.5kg)	23lbs (10.5kg)	12lbs (6kg)
Finishes			



SUB 1000 F

Subwoofer (see p.40)

1 299 €



S900 STAND

Aria 906 compatible
Height: 24" (60cm)
Aluminium finish



05. CHORA

Step into High-Fidelity

Chora is proof that the manufacturing of affordable products in France does not mean skimping on listening quality or the choice of a sophisticated style signature. Equipped with the slatefiber cone - a Focal technology that delivers a unique 'slate' effect - these melodious, must-have loudspeakers combine performance and design as a first foray into the High-Fidelity and Home Cinema universe.





Slatefiber cone



Al/Mg TNF Tweeter



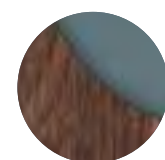
Dolby Atmos® effects



Black finish



Light Wood finish



Dark Wood finish



Shop No.9 , Millenium Star, Dhole Patil Road, Pune - 411001
Landline (20)-41289520 Mobile : (+91) 9607929864/66/68



CHORA 826-D

CHORA 826

CHORA 816

CHORA 806

Type	3-way bass-reflex floorstanding loud-speaker - 1-way sealed	3-way bass reflex floorstanding loudspeaker	2.5-way bass reflex floorstanding loudspeaker	2-way bass reflex bookshelf loudspeaker
Drivers	<ul style="list-style-type: none"> • 2 x 6½" (16.5cm) Slatefiber Woofer • 6½" (16.5cm) Slatefiber Midrange • 1" (25mm) TNF Al/Mg inverted dome tweeter 	<ul style="list-style-type: none"> • 2 x 6½" (16.5cm) Slatefiber Woofer • 6½" (16.5cm) Slatefiber Midrange • 1" (25mm) TNF Al/Mg inverted dome tweeter 	<ul style="list-style-type: none"> • 6½" (16.5cm) Slatefiber Woofer • 6½" (16.5cm) Slatefiber Midrange • 1" (25mm) TNF Al/Mg inverted dome tweeter 	<ul style="list-style-type: none"> • 6½" (16.5cm) Slatefiber Mid-Bass • 1" (25mm) TNF Al/Mg inverted dome tweeter
Frequency response	48Hz - 28kHz Atmos: 100Hz - 20kHz	48Hz - 28kHz	50Hz - 28kHz	58Hz - 28kHz
Low frequency point (-6dB)	39Hz Atmos: 90Hz	39Hz	45Hz	49Hz
Crossover frequency	270Hz / 2,700Hz	270Hz / 2,700Hz	270Hz / 2,700Hz	3,000Hz
Sensitivity (2.83V/1 m)	91dB	91dB	89.5dB	89dB
Nominal impedance	8Ω (min 2.9Ω) Atmos: 6Ω	8Ω (min 2.9Ω)	8Ω (min 4Ω)	8Ω (min 4.6Ω)
Recommended amplifier power	40 - 250W	40 - 250W	40 - 200W	25 - 120W
Dimensions (HxWxD)	41½ x 12 x 15¼" (105 x 30 x 39cm)	41½ x 12 x 15¼" (105 x 30 x 39cm)	40¼ x 12 x 15¼" (102 x 30 x 39cm)	17 x 8¼ x 10⅝" (43 x 21 x 27cm)
Net weight (by unit)	49lbs (22kg)	47lbs (21kg)	41lbs (18.5kg)	16lbs (7.5kg)
Finishes				



CHORA CENTER

CHORA SURROUND

2-way sealed center loudspeaker 2-way sealed surround loudspeaker

- | | |
|--|--|
| <ul style="list-style-type: none"> • 2x 6½" (16.5cm) Slatefiber Mid-Bass • 1" (25mm) TNF Al/Mg inverted dome tweeter | <ul style="list-style-type: none"> • 2x 6½" (16.5cm) Slatefiber Mid-Bass • 1" (25mm) TNF Al/Mg inverted dome tweeter |
|--|--|

59Hz - 28kHz 80Hz - 28kHz

51Hz 67Hz

2,100Hz 3,000Hz

91dB 89dB

8Ω (min 3.8Ω) 8Ω (min 4.5Ω)

40 - 200W 25 - 100W

8¼ x 20⅞ x 10" (21 x 53 x 25cm) 17½ x 4 x 12⅝" (44.5 x 10 x 32cm)

20lbs (9kg) 12lbs (5.5kg)



SUB 600P

Subwoofer (see p.40)



CHORA 806 STAND

Height: 21" (55cm)
Black finish



CHORA CENTER STAND

Height: 17" (45cm)
Black finish



06. SUBWOOFERS

Dynamics, impact and power

The subwoofer is a major component of any audio installation, providing dynamics and intensity. With their seductive design, Focal subwoofers offer deep, impactful and powerful bass. They effectively complement a wide range of audio set-ups, from the ultimate Home Cinema installations to the most compact hi-fi systems.





SUB UTOPIA EM COLOUR EVO

SW 1000 BE

SUB 1000 F

SUB 600P

SUB AIR

CUB EVO

1000 IWSUB UTOPIA

Type	Stackable passive subwoofer	Active bass-reflex subwoofer	Active sealed subwoofer
Speaker drivers	<ul style="list-style-type: none"> Electro-Magnetic 13" (33cm) 'W' bass driver Stackable (up to 3 subwoofers tall) Almost 130dB SPL at 1m (in a corner) 	13" (33cm) 'W' Woofer	12" (30cm) Flax Woofer
Frequency response	22Hz - 500Hz	20Hz - 150Hz	24Hz - 160Hz
Response at - 6dB	19Hz	18Hz	22Hz
Features	Sensitivity (2.83V/1m) 93dB	<ul style="list-style-type: none"> LFE/Stereo/Digital inputs Adjustable LPF: 50Hz to 150Hz (24dB/oct.), 48dB/oct. Adjustable subsonic filter 3 user memories Night mode and Boost mode Autopower 	<ul style="list-style-type: none"> LFE/Stereo inputs Adjustable subsonic filter: 40Hz to 160Hz/12dB/Oct Phase inverter: 0 - 180° Autopower
	Nominal impedance 8Ω		
	Minimal impedance 5.5Ω		
	Recommended amp power 500 - 1,000W		
Amplifier power	-	600W BASH® amplifier	1000W BASH® amplifier
Finishes	● ○ ● ● ●	-	-
Dimensions (HxWxD)	25 ^{15/16} x 19 x 24 ^{1/2} " (634 x 483 x 622cm)	21 ^{1/16} x 19 ^{11/16} x 17" (535 x 500 x 432cm)	16 ^{17/32} x 15 ^{3/4} x 16 ^{17/32} " (420 x 400 x 420cm)
Weight	158.5lbs (72kg)	92.4lbs (42kg)	47lbs (21.5kg)

Type	Active closed subwoofer	Flat bass-reflex subwoofer	Active bass-reflex subwoofer	
Speaker drivers	12" (30cm) Polyflex Woofer	8" (21cm) Woofer cellulose pulp cone	8" (21cm) Polyflex Woofer	
Frequency response	28Hz - 270Hz	42Hz - 200Hz	35Hz - 150Hz	
Response at - 6dB	26Hz	35Hz	30Hz	
Features	<ul style="list-style-type: none"> RCA input: Right, left, LFE Crossover Frequency: Variable 40Hz - 200Hz (LFE) Phase inverter: 0 - 180° AutoStandby enable / disable 	<ul style="list-style-type: none"> Wireless Transmitter (Technology KLEER®) LFE and Left/Right Input Variable 50Hz to 200Hz Autopower 	<ul style="list-style-type: none"> Right, left LFE Variable 40Hz to 200Hz (LFE) On/Autopower (0.5W) 	
	Amplifier power	600W Dynamic 300W RMS	150W BASH® amplifier	200W Class D amplifier
	Finishes	-	● ○	-
	Dimensions (HxWxD)	15 ^{3/4} x 15 ^{3/4} x 16 ^{3/4} " (400 x 400 x 425cm)	16.1 x 14.2 x 6.3" (410 x 360 x 160cm)	12 x 11 ^{1/8} x 11 ^{3/4} " (305 x 282 x 299cm)
Weight	46.3lbs (21kg)	17lbs (7.65kg)	17.5lbs (8kg)	

100 IWSUB8

Built-in subwoofer (see p.17)



Built-in subwoofer (see p.33)



07.

ASTRAL 16

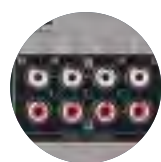
Sound immersion

Astral 16 is a 16-channel audio-video processor and amplifier that allows you to get the best from your loudspeakers. Compatible with Control4, Crestron, Savant and RTI, this cutting-edge electronic device incorporates 12 class-D amplifier channels and handles all audio formats (DolbyAtmos®, DTS:X™ etc.). You can control whichever system you want by room via a simple app, enjoy access to technical support at any time and customise your system as desired.





Audio-video processor



Upgradable product



12 x 250W RMS



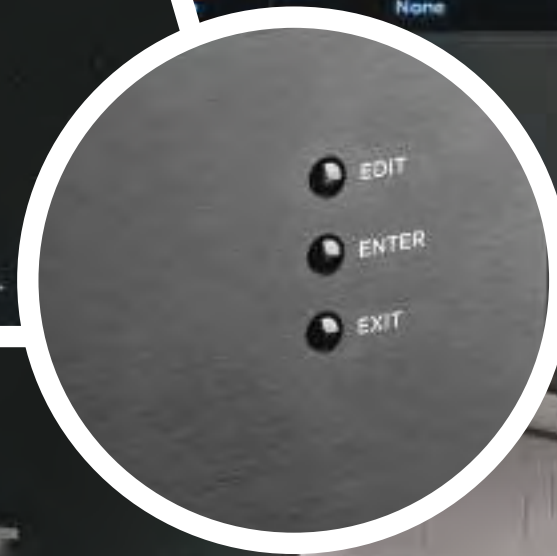
Home Cinema & Multiroom



Dolby Atmos® DTSX® - Auro 3D®



Dirac Live acoustics correction



Shop No.9 , Millenium Star, Dhole Patil Road, Pune - 411001
Landline (20)-41289520 Mobile : (+91) 9607929864/66/68



ASTRAL 16

Type	16 channel audio-video processor and amplifier	
Main features	• Compatible formats	Dolby Atmos [®] / DTS:X [™] / Auro-3D [®]
	• Compatible formats	Powered by Dirac Live [®] : target curve editable from 20Hz to 20kHz for all channels (including subwoofers), phase correction full bandwidth 20Hz - 20kHz on all channels (including subwoofers)
	• 'Remote Monitoring' function	
Multichannel / Surround Processing	• Output channels	16
	• Decoding / upmixing channels	Up to 16 channels
HDMI	• Input sampling rate supported	Up to 192kHz
	• Stereo downmix	Fully flexible
	• Bass management	Unlimited
	• Multi-subwoofer channels	(6-12-18-24-36-48dB/oct)
	• Multi-way crossover	
	• 20 Parametric EQ per channel	
Audio Inputs	• HDMI inputs	7 : HDMI 2.0 / HDCP 2.2
	• HDMI outputs (mirror)	1 : HDMI 2.0 / HDCP 2.2 (with eARC) 2 : HDMI 2.0 / HDCP 2.2
	• Supported video format	up to 4K UHD
	• High Dynamic Range	HDR10 / HLG
	• Color Space and Subsampling	4:4:4, 4:2:2, 4:2:0
	• Deep Color	12 bpc
	• Max resolution supported	4K 60fps 4:4:4 8bpc
Audio Outputs	• Digital input	3 x coaxial, 3 x optical
	• Analog stereo inputs	4 x RCA inputs
Amplified Audio Outputs	• Amplified main outputs	12
	• Analog main outputs, balanced	4 x XLR
	• Stereo downmix outputs, balanced	2 x XLR
	• Technology	Class D
	• Amplified channels	12
Amplified Audio Outputs	• Continuous power output, per channel, to 0.1%THD	8Ω / 4Ω / 2.7Ω
	• 3 channels driven simultaneous	200W / 400W / 650W
	• 6 channels driven simultaneous	200W / 350W / 350W
	• 12 channels driven simultaneous	200W / 300W

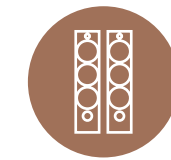
Set-Up Management	<ul style="list-style-type: none"> • Configurable multi-theater management • Configurable audio zones management • Unlimited Theater and audio zones listening presets • Backup and restore of set-up • Firmware update via USB/network 	
	Control Inputs and Outputs	<ul style="list-style-type: none"> • USB type A 2 • Ethernet • Trigger 4 (out) • IR remote ports, in/out 1 / 1
Control and custom Installation	<ul style="list-style-type: none"> • Web-based product configurator • TCP/IP API based control • Focal Remote iPad[®] control application • Home automation Control4, Crestron, RTI and Savant • Front panel display TFT 4.3" 	
	Power Supply	<ul style="list-style-type: none"> • Voltage range 100V to 240V • Type SMPS • Range selection Universal
Supplied with	<ul style="list-style-type: none"> • Calibrated measurement microphone and tripod • Dirac Live[®] license • 32.9ft (10m) cable with infra-red detector • Mounting kit 	
	Dimensions avec stands (HxWxD)	7½ x 18¾ x 19¼" (19.1 x 47.9 x 49cm)
Weight	Weight net with stands	44.1lbs (20kg)
	Weight net with accessories for Rack (kg/lbs)	50.7lbs (23 kg)



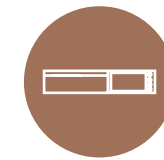
FOCAL & NAIM

Complete systems

With Focal and Naim's complementary products, you can enjoy complete solutions. Our loudspeakers are designed to reveal a pure sound, the embodiment of the spirit of High Fidelity. Our all-in-one systems allow you to take full advantage of the loudspeakers' performance, and are a simple and smart way of managing your music from a single source: access integrated streaming services, (Spotify, Tidal, Qobuz, etc.), improve the sound of your TV, and enjoy your CDs and radio stations and more.



Focal
loudspeakers



Uniti music-streaming
system



Matching
cables



Shop No.9 , Millenium Star, Dhole Patil Road, Pune - 411001
Landline (20)-41289520 Mobile : (+91) 9607929864/66/68

CHORA 806 UNITI ATOM



Shop No.9 , Millenium Star, Dhole Patil Road, Pune - 411001
Landline (20)-41289520 Mobile : (+91) 9607929864/66/68



CHORA 826
UNITI ATOM



— 55 — FOCAL & NAIM | SOLUTIONS



Shop No.9 , Millenium Star, Dhole Patil Road, Pune - 411001
Landline (20)-41289520 Mobile : (+91) 9607929864/66/68

ARIA 926
UNITI STAR



KANTA N°1
UNITI STAR



— 59 — FOCAL & NAIM | SOLUTIONS



Shop No.9 , Millenium Star, Dhole Patil Road, Pune - 411001
Landline (20)-41289520 Mobile : (+91) 9607929864/66/68

KANTA N°2
UNITI NOVA



—Ω— FOCAL & NAIM | SOLUTIONS



Shop No.9 , Millenium Star, Dhole Patil Road, Pune - 411001
Landline (20)-41289520 Mobile : (+91) 9607929864/66/68



UTOPIA



'Musically, audiophiles could not ask for anything more than the Grande'

AUDIOPHILIA

'The Stellas are really bespoke loudspeakers, and to me, musical works of art'

TONE PUBLICATIONS



'With all that grace, power, and finesse on tap, when it comes to music the Maestro is a genuinely do it all performer'

HIFI PLUS



SOPRA



'The Sopra N°2 is literally and figuratively an impressive loudspeaker'

THE EARNET



'It's difficult to live without it'

SOUND STAGE HIFI



KANTA



'The Focal Kanta N°3 delivers terrific sound quality and a stylish design for its price'

WHAT HI-FI

'Tonally, the Focal is absolutely magnificent'

AV FORUMS



Shop No.9 , Millenium Star, Dhole Patil Road, Pune - 411001
Landline (20)-41289520 Mobile : (+91) 9607929864/66/68



www.allhomeliving.com



ARIA



'The sound quality offered for the price is excellent'

THE EAR NET



'It offers superb tonality, a wonderful soundstage and it is built like a Swiss watch'

AV FORUMS



CHORA



'A supremely talented speaker that delivers an exceptional level of performance'

HIFICHOICE

'Focal's 5.1.4 Chora system delivers impressive performance for the price and is equally adept at movies and music'

SOUND AND VISION



Shop No.9 , Millenium Star, Dhole Patil Road, Pune - 411001
Landline (20)-41289520 Mobile : (+91) 9607929864/66/68



ASTRAL 16



'An experience that was spine-tingling'

HOME CINEMA CHOICE

'This is high-end hardware fit for the finest of setups'

AVTECH MEDIA



www.allhomeliving.com

HOME COLLECTION

2021



AUDIO SOLUTIONS
HANDCRAFTED IN FRANCE

For more than four decades, Focal has created speaker drivers and high-end loudspeakers that deliver a unique sound. Our brand values are innovation and performance; excellence and pleasure. We are globally renowned for our exclusive technologies. The result of this technological heritage is class-leading products offering a natural, authentic performance, imbued with clarity and power. With our collection of acoustic loudspeakers, we bring you excellent listening quality, both in stereo and Home Cinema set ups, through solutions with an exceptional design.



Shop No.9 , Millenium Star, Dhole Patil Road, Pune - 411001
Landline (20)-41289520 Mobile : (+91) 9607929864/66/68





HOME THEATER



KITCHEN



BATHROOM



OUTDOORS



LIVING ROOM



BEDROOM



SPORTS ROOM



HALLWAYS



Shop No.9 , Millenium Star, Dhole Patil Road, Pune - 411001
Landline (20)-41289520 Mobile : (+91) 9607929864/66/68



www.allhomeliving.com

RANGES

1000 SERIES

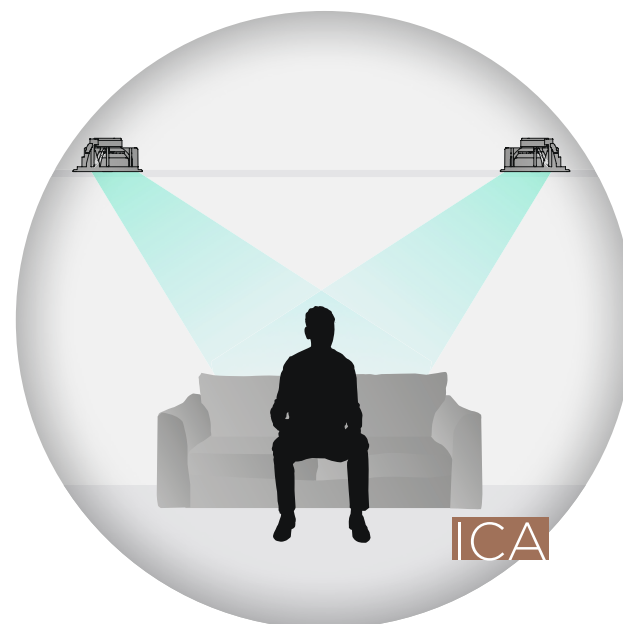
Exclusive 'W' technology
and pure Beryllium tweeter

300 SERIES

Exclusive Flax technology
and Aluminium/Magnesium tweeter

100 SERIES

Polyglass technology
and Aluminium/Magnesium tweeter

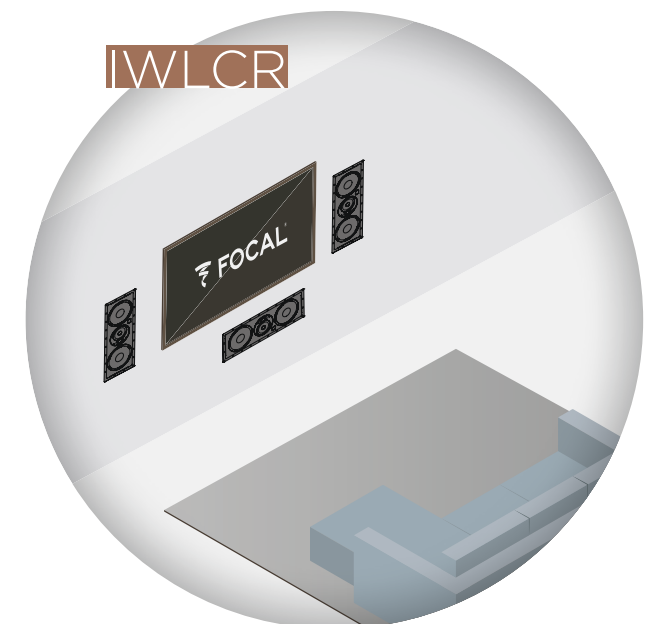


APPLICATIONS

- IC In-Ceiling**
In-ceiling loudspeaker
- IW In-Wall**
In-wall loudspeaker
- ICW In-Wall / In-Ceiling**
In-wall and in-ceiling loudspeaker
- IWLCR In-Wall Left Center Right**
In-wall loudspeaker for left, right
and center or surround channels
- ICLCR In-Ceiling Left Center Right**
In-ceiling loudspeaker for left, right
and center or surround channels
- ST Stereo**
In-wall and in-ceiling loudspeaker
producing a stereo effect
- ICA In-Ceiling Angled**
In-ceiling angled loudspeaker
for Dolby Atmos® effects
- OD Outdoor**
IP66-certified outdoor loudspeaker
- SUB Subwoofer**
Integrated subwoofer

SPEAKER DRIVER DIAMETER

- 4 4" or 10cm
- 5 5" or 13cm
- 6 6" or 16.5cm
- 8 8" or 21cm



Shop No.9 , Millenium Star, Dhole Patil Road, Pune - 411001
Landline (20)-41289520 Mobile : (+91) 9607929864/66/68





1000 SERIES



300 SERIES



100 SERIES



ON WALL 300



DÔME FLAX



SIB EVO



MU-SO



IN-CEILING

1000 ICLCR5 1000 ICA6 1000 ICW6	300 ICLCR5 300 ICW8 300 ICW6 300 ICW4	100 ICLCR5 100 IC6ST 100 ICW8 100 ICW6 100 ICW5
---------------------------------------	--	---



ON-CEILING

100 OD8 100 OD6



IN-WALL

1000 ICW6 1000 IWLCR UTOPIA 1000 IWSUB UTOPIA 1000 IWLCR6 1000 IW6	300 ICW8 300 ICW6 300 ICW4 300 IWLCR6 300 IW6	100 ICW8 100 ICW6 100 ICW5 100 IWLCR5 100 IW6 100 IWSUB8
--	---	---



ON-WALL

1000 IWLCR UTOPIA* 1000 IWSUB UTOPIA* 1000 IWLCR6* 1000 IW6*		100 OD8 100 OD6
---	--	--------------------



SUR MOBILIER

	DÔME FLAX	SIB EVO	
--	-----------	---------	--

ON WALL 301 ON WALL 302	DÔME FLAX	SIB EVO SIB EVO DOLBY ATMOS®	
----------------------------	-----------	---------------------------------	--

	DÔME FLAX	SIB EVO SIB EVO DOLBY ATMOS®	MU-SO MU-SO QB
--	-----------	---------------------------------	-------------------



Shop No.9 , Millenium Star, Dhole Patil Road, Pune - 411001
Landline (20)-41289520 Mobile : (+91) 9607929864/66/68

* On-wall frames available as optional extra



www.allhomeliving.com

01.
1000 SERIES

13



02.
300 SERIES

21

03.
100 SERIES

27



04.
ON WALL 300

39

05.
DÔME FLAX

45



06.
SIB EVO

51



07.
SUBWOOFERS

59



08.
ASTRAL 16

63

09.
UNITI

69



10.
MU-SO

75



01.

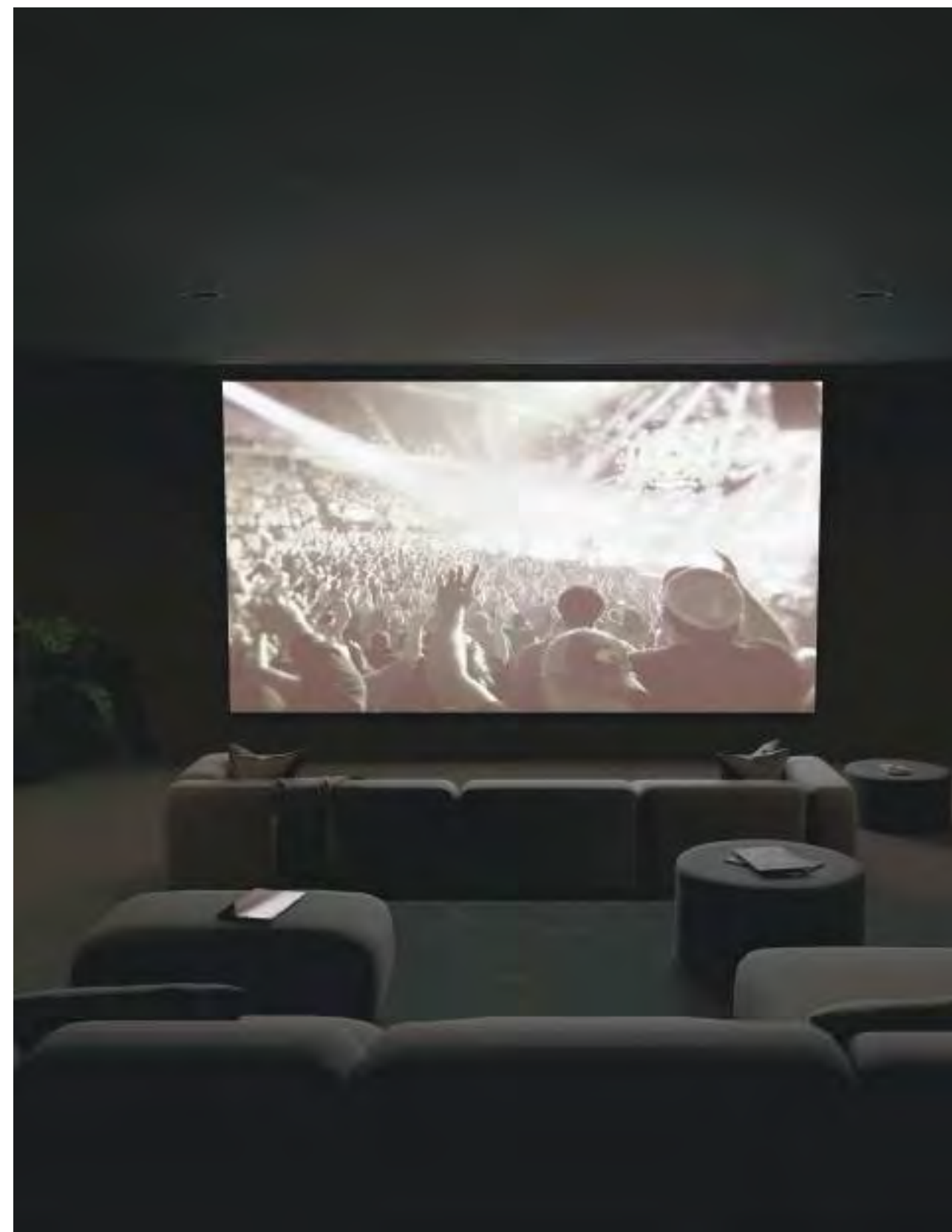
1000 SERIES

Unrivalled listening experiences

With seven exceptional products, the 1000 Series line promises unrivalled stereo and home cinema sound reproduction. These in-wall and in-ceiling loudspeakers are discreet, complementary, and can be adjusted and positioned for flawless sound spatialisation without compromise in your listening area. Both Utopia products enhance the line with their power and their design, specifically designed to be assembled together.

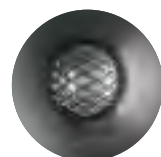


Shop No.9 , Millenium Star, Dhole Patil Road, Pune - 411001
 Landline (20)-41289520 Mobile : (+91) 9607929864/66/68





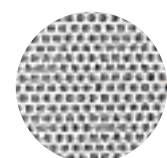
'W' sandwich cone



Pure Beryllium tweeter



Positionable speaker drivers



Ready-to-paint grille



Bespoke solution



Easy Quick Install



Shop No.9 , Millenium Star, Dhole Patil Road, Pune - 411001
Landline (20)-41289520 Mobile : (+91) 9607929864/66/68



UTOPIA

The icon streets ahead of the rest

The collection's iconic flagship product, the 1000 Series Utopia loudspeaker does a sensational job at picking up the smallest sound details in films. Thanks to its midrange-treble plate in the d'Appolito configuration, and with different speaker driver settings, the installation can be fully customised. For the ultimate system, the 1000 Series Utopia subwoofer has been designed to combine perfectly with the loudspeaker and to offer exceptional bass.

HANDCRAFTED
IN FRANCE



Shop No.9 , Millenium Star, Dhole Patil Road, Pune - 411001
Landline (20)-41289520 Mobile : (+91) 9607929864/66/68



1000 IWLCR UTOPIA



1000 IWSUB UTOPIA

Type	3-way closed-back in-wall	Closed-back in-wall	
Speaker drivers	<ul style="list-style-type: none"> 4 x 6¹/₂" (16.5cm) 'W' Bass 2 x 3¹/₈" (8cm) 'W' cone 'M'-shaped Midranges 1" (27mm) pure Beryllium inverted dome tweeter 	3 x 6 ¹ / ₂ " (16.5cm) Bass with 'W' cone	
Frequency response	45Hz - 40kHz	40Hz - 25kHz	
Sensitivity (2.83V/1m)	92dB	83dB	74dB
Nominal impedance	8Ω	8Ω	72Ω
Recommended amp power	100 - 750W (8Ω) 200 - 1500W (4Ω)	10Ω (selection 8Ω)	90Ω (selection 72Ω)
Settings	Tweeter (-3dB, 0dB, +3dB) Midrange (-2dB, 0dB, +2dB) Bass (-2dB, 0dB, +2dB)	Impedance selector 8Ω - 72Ω	
Dimensions (HxWxD)	45 ³ / ₄ x 12 x 4" (1162 x 305 x 101mm)	23 ³ / ₈ x 12 x 4" (593 x 305 x 101mm)	
Mounting dimensions (HxW)	44 ⁵ / ₈ x 10 ⁷ / ₈ " (1134 x 276mm)	22 ¹ / ₄ x 10 ⁷ / ₈ " (564 x 276mm)	
Mounting depth	3 ⁷ / ₈ " (99mm)	3 ⁷ / ₈ " (99mm)	
Weight (with grille)	42.77lbs (19.4kg)	21.16lbs (9.6kg)	
Accessory (optional)	On-Wall frame	On-Wall frame	


1000 IWLCR6
1000 IW6

Type	3-way closed-back in-wall	2-way closed-back in-wall
Speaker drivers	<ul style="list-style-type: none"> • 7¹/₈" (18cm) 'W' Passive radiator • 6¹/₂" (16.5cm) 'W' Bass • 3¹/₈" (8cm) 'W' Midrange • 1" (27mm) Pure Beryllium inverted dome tweeter 	<ul style="list-style-type: none"> • 6¹/₂" (16.5cm) 'W' Mid-Bass • 1" (27mm) Pure Beryllium inverted dome tweeter
Frequency response	48Hz - 40kHz	55Hz - 40kHz
Sensitivity (2.83V/1m)	91dB	89dB
Nominal impedance	8Ω	8Ω
Recommended amp power	50 - 180W	25 - 150W
Settings	Tweeter (-3dB, 0dB, +3dB) Midrange (-3dB, 0dB, +3dB)	Tweeter (-3dB, 0dB, +3dB)
Dimensions (HxWxD ou ØxD)	29 ³ / ₄ x 12 x 4" (755 x 305 x 101mm)	17 ¹ / ₈ x 12 x 4" (435 x 305 x 101mm)
Mounting dimensions (HxW ou Ø)	28 ⁵ / ₈ x 10 ⁷ / ₈ " (726 x 276mm)	16 x 10 ⁷ / ₈ " (406 x 276mm)
Mounting depth	3 ⁷ / ₈ " (99mm)	3 ⁷ / ₈ " (99mm)
Weight (with grille)	24.14lbs (10.95kg)	14.88lbs (6.75kg)
Accessory (optional)	On-Wall frame	On-Wall frame


1000 ICLCR5
1000 ICA6
1000 ICW6

Type	3-way bass-reflex in-ceiling	2-way coaxial in-ceiling	2-way in-wall/in-ceiling
Speaker drivers	<ul style="list-style-type: none"> • 2 x 5¹/₈" (13cm) 'W' Bass • 4" (10cm) 'W' Midrange • 1" (25mm) Beryllium inverted dome tweeter 	<ul style="list-style-type: none"> • 6¹/₂" (16.5cm) 'W' Mid-Bass • 1" (25mm) Pure Beryllium inverted dome tweeter 	<ul style="list-style-type: none"> • 6¹/₂" (16.5cm) 'W' Mid-Bass • 1" (25mm) Pure Beryllium inverted dome tweeter
Frequency response	53Hz - 40kHz	55Hz - 40kHz	55Hz - 40kHz
Sensitivity (2.83V/1m)	91dB	90.5dB	89dB
Nominal impedance	8Ω	8Ω	8Ω
Recommended amp power	25 - 240W	25 - 150W	25 - 150W
Settings	Tweeter (-3dB, 0dB, +3dB) Midrange (-3dB, 0dB, +3dB)	Tweeter (-3dB, 0dB, +3dB)	Tweeter (-3dB, 0dB, +3dB)
Dimensions (HxWxD ou ØxD)	14 ⁵ / ₈ x 14 ⁵ / ₈ x 7 ⁵ / ₈ " (370 x 370 x 195mm)	11 ³ / ₄ x 5" (299 x 127mm)	9 ⁵ / ₈ x 4 ¹ / ₈ " (244 x 105mm)
Mounting dimensions (HxW ou Ø)	13 ³ / ₈ x 13 ³ / ₈ " (340 x 340mm)	10 ³ / ₈ " (264mm)	8 ¹ / ₂ " (216mm)
Mounting depth	7 ¹ / ₂ " (190mm)	5 ³ / ₄ " (146mm)	4" (100mm)
Weight (with grille)	18.30lbs (8.3kg)	6.61lbs (3kg)	5.29lbs (2.4kg)
Accessory (optional)	-	-	-



Shop No.9 , Millenium Star, Dhole Patil Road, Pune - 411001
Landline (20)-41289520 Mobile : (+91) 9607929864/66/68

02.

300 SERIES

A source of inspiration...

Bring a whole new vibe to your spaces with the 300 Series and its natural flax cone speaker drivers. In addition to the acoustic qualities and sound clarity they offer, the products are innovatively designed and quick to fit, thanks to the Easy Quick Install (EQI) system. Whether for stereo or Home Cinema use, or as a complement to a traditional hi-fi system, all you need to do is make your choice and enjoy.

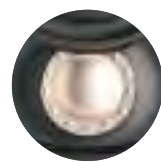


Shop No.9 , Millenium Star, Dhole Patil Road, Pune - 411001
Landline (20)-41289520 Mobile : (+91) 9607929864/66/68

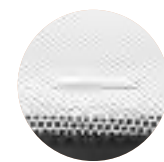




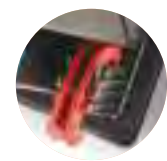
Flax cone



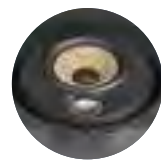
Al/Mg tweeter



Ready-to-paint grille



Easy Quick Install



Positionable plate



Tweeter and midrange settings



Shop No.9 , Millenium Star, Dhole Patil Road, Pune - 411001
Landline (20)-41289520 Mobile : (+91) 9607929864/66/68


300 IWLCR6

300 IW6

300 ICLCR5

Type	3-way in-wall D'Appolito	2-way in-wall	3-way bass-reflex in-ceiling
Speaker drivers	<ul style="list-style-type: none"> • 2 x 6^{1/2}" (16.5cm) Woofers • 4" (10cm) Flax Midrange • 1" (25mm) Al/Mg inverted dome Tweeter 	<ul style="list-style-type: none"> • 6^{1/2}" (16.5cm) Flax cone Mid-Bass • 1" (25mm) Al/Mg inverted dome Tweeter 	<ul style="list-style-type: none"> • 2 x 5" (13cm) Flax woofers • 4" (10cm) Flax Midrange • 1" (25mm) Al/Mg inverted dome Tweeter
Frequency response	40Hz - 28kHz	55Hz - 28kHz	55Hz - 28kHz
Sensitivity (2.83V/1m)	92dB	90dB	91dB
Nominal impedance	8Ω	8Ω	8Ω
Recommended amp power	50 - 150W	25 - 130W	50 - 150W
Settings	Tweeter (-3dB, 0dB, +3dB) Midrange (-3dB, 0dB, +3dB)	Tweeter (-3dB, 0dB, +3dB) Midrange (-3dB, 0dB, +3dB)	Tweeter (-3dB, 0dB, +3dB) Midrange (-3dB, 0dB, +3dB)
Dimensions (HxWxD ou ØxD)	23 ^{5/8} x 8 ^{1/16} x 3 ^{7/8} " (600 x 220 x 98mm)	12 ^{3/4} x 8 ^{1/16} x 3 ^{7/8} " (323 x 220 x 98mm)	14 ^{9/16} x 14 ^{9/16} x 7 ^{11/16} " (370 x 370 x 195mm)
Mounting dimensions (HxW ou Ø)	22 ^{3/8} x 7 ^{1/2} " (568 x 191mm)	11 ^{1/2} x 7 ^{1/2} " (292 x 191mm)	13 ^{3/8} " x 13 ^{3/8} " (340x340mm)
Mounting depth	3 ^{5/8} " (93mm)	3 ^{5/8} " (93mm)	7 ^{1/2} " (190mm)
Weight	12.4lbs (5.65kg)	4.9lbs (2.25kg)	16.3lbs (7.4kg)


300 ICW8

300 ICW6

300 ICW4

Type	2-way in-wall/in-ceiling coaxial	2-way in-wall/in-ceiling coaxial	In-wall/in-ceiling 2-way
Speaker drivers	<ul style="list-style-type: none"> • 8" (21cm) Flax Mid-Bass • 1" (25mm) Al/Mg inverted dome Tweeter 	<ul style="list-style-type: none"> • 6^{1/2}" (16.5cm) Flax Mid-Bass • 1" (25mm) Al/Mg inverted dome Tweeter 	<ul style="list-style-type: none"> • 4" (10cm) Flax Mid-Bass • 1" (25mm) Al/Mg inverted dome Tweeter
Frequency response	48Hz - 28kHz	65Hz - 28kHz	80Hz - 28kHz
Sensitivity (2.83V/1m)	90dB	89dB	88dB
Nominal impedance	8Ω	8Ω	8Ω
Recommended amp power	25 - 150W	25 - 130W	25 - 100W
Settings	Tweeter (-3dB, 0dB, +3dB)	Tweeter (-3dB, 0dB, +3dB)	Tweeter (-3dB, 0dB, +3dB)
Dimensions (HxWxD ou ØxD)	11 ^{3/4} x 11 ^{3/4} x 5" (299 x 299 x 127mm)	9 ^{5/8} " x 9 ^{5/8} " x 4 ^{1/8} " (244 x 244 x 105mm)	7 ^{9/16} x 7 ^{9/16} x 3 ^{7/8} " (192 x 192 x 98mm)
Mounting dimensions (HxW ou Ø)	10 ^{3/8} " (264mm)	8 ^{1/2} " (216mm)	6 ^{3/8} " (163mm)
Mounting depth	4 ^{3/4} " (122mm)	4" (100mm)	3 ^{5/8} " (93mm)
Weight	7.05lbs (3.2kg)	5.29lbs (2.4kg)	2.6lbs (1.3kg)



Shop No.9 , Millenium Star, Dhole Patil Road, Pune - 411001
 Landline (20)-41289520 Mobile : (+91) 9607929864/66/68

03.

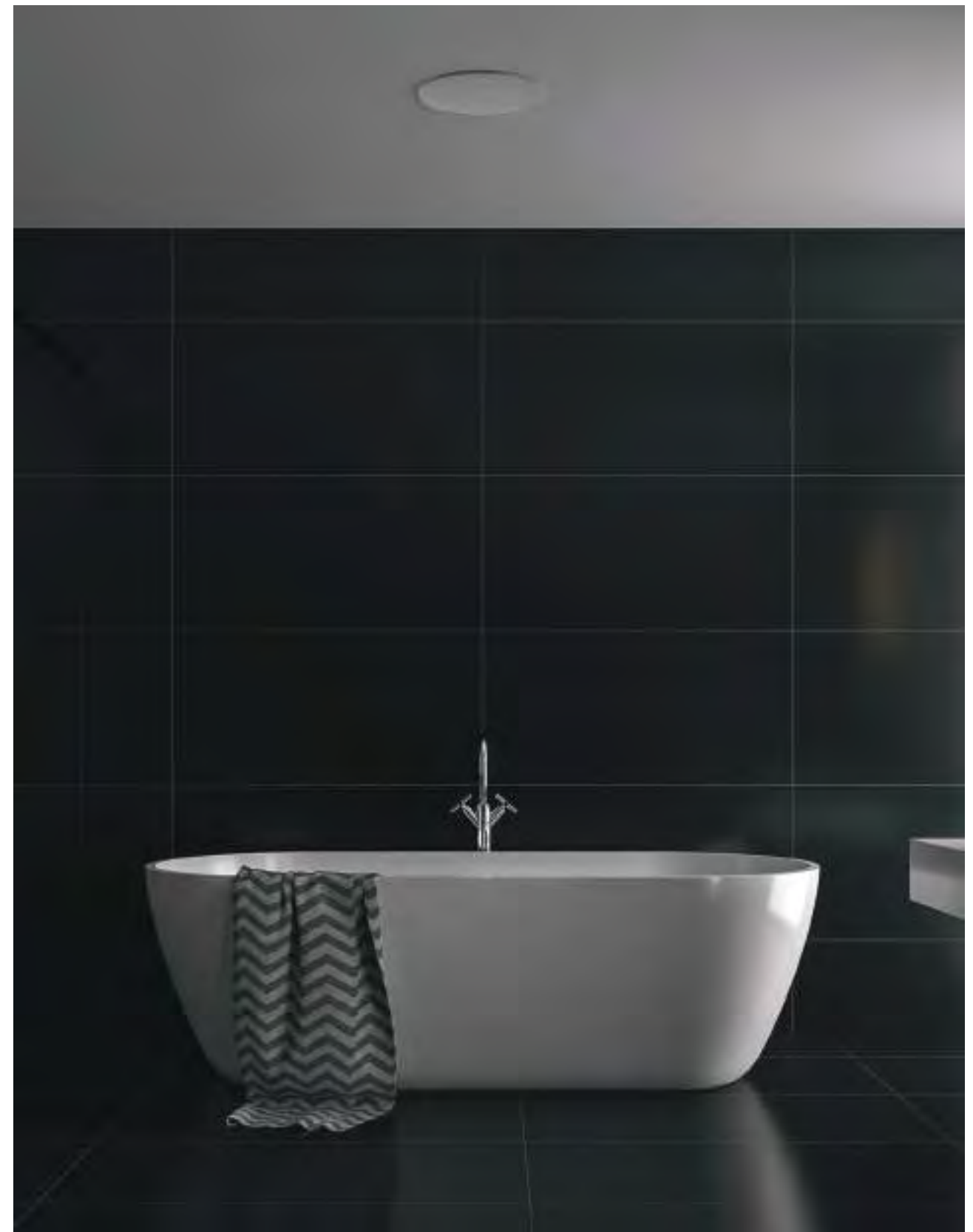
100 SERIES

Discreet musicality

A comprehensive solution for your home audio needs, indoors and outdoors, the 100 Series offers outstanding performance from a compact design. The range is ideal for small-to-medium-sized rooms, for seamless sound throughout the house, stereo listening or Home Cinema installations. The tropicalised Polyglass cone is even suited for bathroom use, too.



Shop No.9 , Millenium Star, Dhole Patil Road, Pune - 411001
 Landline (20)-41289520 Mobile : (+91) 9607929864/66/68

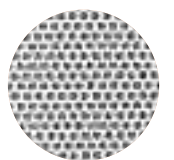




Polyglass cone



Aluminium tweeter



Ready-to-paint grille



Positionable tweeter



Tropicalised cone



Compact design unibody chassis



Shop No.9 , Millenium Star, Dhole Patil Road, Pune - 411001
Landline (20)-41289520 Mobile : (+91) 9607929864/66/68



	100 IWLCR5	100 IW6	100 ICLCR5
Type	2-way in-wall D'Appolito	2-way in-wall	2-way in-ceiling
Speaker drivers	<ul style="list-style-type: none"> • 2 x 5" (13cm) Polyglass Mid-Bass • 1" (25mm) Aluminium inverted dome tweeter 	<ul style="list-style-type: none"> • 6¹/₂" (16,5cm) Polyglass Mid-Bass • 1" (25mm) Aluminium inverted dome tweeter 	<ul style="list-style-type: none"> • 2 x 5" (13cm) Polyglass Mid-Bass • 1" (25mm) Aluminium inverted dome tweeter • 8" (21cm) Polyglass Passive radiator
Frequency response	55Hz - 23kHz	60Hz - 23kHz	65Hz - 23kHz
Sensitivity (2.83V/1m)	90.5dB	89dB	92dB
Nominal impedance	8Ω	8Ω	8 Ω
Recommended amp power	25 - 120W	25 - 120W	25 - 120W
Settings	Tweeter (-3dB, 0dB, +3dB) Midrange (-3dB, 0dB, +3dB)	Tweeter (-3dB, 0dB, +3dB) Midrange (-3dB, 0dB, +3dB)	Tweeter (-3dB, 0dB, +3dB)
Dimensions (HxWxD ou ØxD)	17 ³ / ₈ x 6 ³ / ₄ x 3 ³ / ₈ " (440 x 173 x 86mm)	11 ³ / ₄ x 7 ⁵ / ₈ x 3 ⁵ / ₈ " (298 x 195 x 92mm)	14 x 14 x 5 ⁵ / ₁₆ " (354 x 354 x 150mm)
Mounting dimensions (HxW ou Ø)	16 ³ / ₈ " x 5 ³ / ₄ " (415 x 147mm)	10 ³ / ₄ x 6 ³ / ₄ " (273 x 170mm)	12 ⁷ / ₈ x 12 ⁷ / ₈ " (328 x 328mm)
Mounting depth	3 ¹ / ₄ " (83mm)	3 ¹ / ₂ " (88mm)	6" (152mm)
Weight	3.89lbs (2.9kg)	4.1lbs (1.85kg)	11.6lbs (5.3kg)

	100 IC6ST	100 ICW8	100 ICW6	100 ICW5
Type	In-ceiling - stereo 2-way coaxial	In-wall/in-ceiling 2-way coaxial	In-wall/in-ceiling 2-way coaxial	In-wall/in-ceiling 2-way coaxial
Speaker drivers	<ul style="list-style-type: none"> • 6¹/₂" (16,5cm) Dual voice coil Polyglass Mid-Bass • 1" (25mm) Aluminium inverted dome tweeter 	<ul style="list-style-type: none"> • 8" (21cm) Polyglass Mid-Bass • 1" (25mm) Aluminium inverted dome tweeter 	<ul style="list-style-type: none"> • 6¹/₂" (16.5cm) Polyglass Mid-Bass • 1" (25mm) Aluminium inverted dome tweeter 	<ul style="list-style-type: none"> • 5" (13cm) Polyglass Mid-Bass • 1" (25mm) Aluminium inverted dome tweeter
Frequency response	60Hz - 23kHz	53Hz - 23kHz	62Hz - 23kHz	65Hz - 23kHz
Sensitivity (2.83V/1m)	89dB	90dB	89dB	88dB
Nominal impedance	8Ω	8Ω	8Ω	8Ω
Recommended amp power	25 - 100W	25 - 150W	25 - 100W	15 - 100W
Settings	Tweeter (-3dB, 0dB, +3dB)	Tweeter (-3dB, 0dB, +3dB)	Tweeter (-3dB, 0dB, +3dB)	Tweeter (-3dB, 0dB, +3dB)
Dimensions (HxWxD ou ØxD)	8 ³ / ₁₆ x 3 ³ / ₄ " (208 x 95mm)	9 ³ / ₄ x 4 ³ / ₈ " (248 x 111mm)	8 ³ / ₁₆ x 3 ³ / ₄ " (208 x 95mm)	7 ¹ / ₄ x 3 ⁷ / ₁₆ " (184 x 87mm)
Mounting dimensions (HxW ou Ø)	7 ¹ / ₄ " (184mm)	8 ¹ / ₁₆ " (224mm)	7 ¹ / ₄ " (184mm)	6 ⁵ / ₁₆ " (160mm)
Mounting depth	3 ⁵ / ₈ " (91mm)	4 ¹ / ₄ " (107mm)	3 ³ / ₄ " (91mm)	3 ¹ / ₄ " (82mm)
Weight	3.86lbs (1.75kg)	3.86lbs (1.75kg)	3.3lbs (1.5kg)	3.19lbs (1.45kg)



Shop No.9 , Millenium Star, Dhole Patil Road, Pune - 411001
Landline (20)-41289520 Mobile : (+91) 9607929864/66/68



100 IWSUB8

Type	Passive subwoofer
Speaker drivers	8" (21cm) Polyglass Woofer
Frequency response	34 - 140Hz
Sensitivity (2.83V/1m)	89dB
Nominal impedance	8Ω
Recommended amp power	Max 200W / 4Ω
Dimensions (WxDxH)	13 ⁷ / ₈ x 3 ⁷ / ₈ x 5 ¹³ / ₁₆ " (352 x 98 x 1,300mm)
Mounting dimensions (WxH)	13 ⁷ / ₈ x 5 ¹³ / ₁₆ " (352 x 1,300mm)
Mounting depth	3 ³ / ₈ " (86mm)
Weight	32.3lbs (14.6kg)



100 IWSUB8 AMPLIFIER

Type	Subwoofer amplifier
Power (continuous)	Max 200W, 150W continuous 4Ω
Minimum load	4Ω
Voltage range	100 - 120V / 60Hz 220 - 230V / 50Hz
Power consumption	150W
Stand-by power consumption	0.5W
Frequency response	20 - 250Hz
Subsonic filter	18dB / oct.
Inputs	LFE, Line in L/R
Outputs	Line out L/R and subwoofer out binding post
Cord	Detachable IEC power cord
Protection	Dynamic power control, thermal protection, short circuit, fuse and over-current protection
Dimensions (HxWxD)	1.8" (2" with feets) x 16.9" (19" with rack brackets) x 10.1"
Weight	6.8lbs (3.1kg)



100 OD8

100 OD6

Type	Outdoor loudspeaker	Outdoor loudspeaker
Speaker drivers	<ul style="list-style-type: none"> 8" (210mm) waterproof woofer with Polyglass treatment Aluminum inverted dome tweeter 	<ul style="list-style-type: none"> 6¹/₂" (165mm) waterproof woofer with Polyglass treatment Aluminum inverted dome tweeter
Frequency response	60Hz - 23kHz	65Hz - 23kHz
Sensitivity (2.83V/1m)	88dB	87dB
Nominal impedance	8Ω	8Ω
Recommended amp power	20 - 150W	20 - 120W
Dimensions with brackets (HxWxD)	15 ⁵ / ₁₆ x 10 ³ / ₁₆ x 11" (390 x 258 x 280mm)	12 ⁹ / ₁₆ x 8 ¹³ / ₁₆ x 10 ¹ / ₁₆ " (319 x 224 x 256mm)
Weight	12.6lbs (5.8kg)	9lbs (4.1kg)



Shop No.9 , Millenium Star, Dhole Patil Road, Pune - 411001
Landline (20)-41289520 Mobile : (+91) 9607929864/66/68

PRE-ASSEMBLY KITS

These kits allow you to precisely position in-wall and in-ceiling products in new builds. They comprise a mounting strip combined with a frame for the perfect placement of your loudspeakers.

Product compatibility

1000 IWLCR UTOPIA
2 X IWSUB UTOPIA
1000 IWSUB UTOPIA
1000 IWLCR UTOPIA & 1000 IWSUB UTOPIA
1000 IWLCR UTOPIA & 2 X 1000 IWSUB UTOPIA
1000 IWLCR6
1000 IW6
1000 ICLCR5
300 ICLCR5
300 IWLCR6
300 IW6
1000 ICA6
300 ICW8
1000 ICW6
300 ICW6
300 ICW4
100 IWLCR5
100 IW6
100 ICLCR5
100 ICW8
100 ICW6
100 IC6ST
100 ICW5

ACCESSORIES

Integrated loudspeakers



Shop No.9 , Millenium Star, Dhole Patil Road, Pune - 411001
Landline (20)-41289520 Mobile : (+91) 9607929864/66/68

ON-WALL FRAMES

Mounted frames allow loudspeakers to be installed on walls. They are available in White High Gloss or raw, ready-to-paint finish. Slim, in-wall anti-vibration studs allow for easy installation.



Product compatibility

1000 IWLCR UTOPIA
1000 IWSUB UTOPIA
1000 IWLCR6
1000 IW6

FIRE BACKCAN

Designed with materials specially adapted to high temperatures, this fire-proof built-in casing ensures your installation is safe, for perfect reliability. It also provides sound insulation.



Insulator	Product compatibility			Dimensions (HxWxD)
	1000 SERIES	300 SERIES	100 SERIES	
1 5/8" (40mm) ceramic fibre	1000 ICW6	300 ICW4 300 ICW6 300 IW6	100 ICW5 100 ICW6 100 ICW8 100 IC6ST 100 IW6	18 7/8" x 19" x 5 7/8" (478 x 482 x 149mm)



Shop No.9 , Millenium Star, Dhole Patil Road, Pune - 411001
Landline (20)-41289520 Mobile : (+91) 9607929864/66/68



04.

ON WALL 300

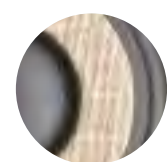
Creating emotion

Designed for stereo and Home Cinema use, the allure of the On Wall 300 loudspeakers lies in their sleek design, 'angled' silhouette and incredible sound. Their speaker drivers boast a natural Flax cone to bring realism, vocal clarity and sonic detail into your home. Available in a White High Gloss or Black Satin finish, On Wall blends seamlessly into interiors, around a television.



Shop No.9 , Millenium Star, Dhole Patil Road, Pune - 411001
 Landline (20)-41289520 Mobile : (+91) 9607929864/66/68





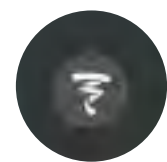
Flax cone



Al/Mg tweeter



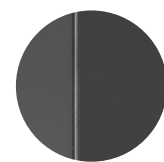
Side vents



Magnetic grille



White High Gloss finish



Black Satin finish



Shop No.9 , Millenium Star, Dhole Patil Road, Pune - 411001
Landline (20)-41289520 Mobile : (+91) 9607929864/66/68



ON WALL 301



ON WALL 302

Type	2-way loudspeaker	2.5-way loudspeaker
Speaker drivers	<ul style="list-style-type: none"> • 2 x 4" (100mm) Flax Mid-Bass • 1 x 1" (25mm) Tweeter TNF 	<ul style="list-style-type: none"> • 4 x 4" (100mm) Flax Mid-Bass • 1 x 1" (25mm) Tweeter TNF
Frequency response	53Hz - 28kHz	50Hz - 28kHz
Crossover frequency	2,500Hz	1,100Hz - 2,500Hz
Sensitivity (2.83V/1m)	87dB	91dB
Nominal impedance	8Ω	8Ω
Recommended amp power	25 - 130W	40 - 180W
Dimensions (HxWxD)	31 ¹ / ₂ x 6 ¹ / ₈ x 3 ⁹ / ₁₆ " (80 x 15.5 x 9cm)	49 ³ / ₁₆ x 6 ¹ / ₈ x 3 ⁹ / ₁₆ " (125 x 15.5 x 9cm)
Finishes	● ○	● ○
Weight	13lbs (5.9kg)	20.72lbs (9.4kg)



Stands sold separately.

ON WALL 300 STAND



Shop No.9 , Millenium Star, Dhole Patil Road, Pune - 411001
Landline (20)-41289520 Mobile : (+91) 9607929864/66/68

05.

DÔME FLAX


The sound spotlight


Made in France, Dôme is a line of miniature loudspeakers boasting a Flax sandwich cone, exclusive to Focal. This technology provides genuine benefits in terms of sound definition and precision. In terms of appearance, the Dôme design blends fine materials and elegant finishes. The loudspeakers are positionable and easily integrated into the wall, ceiling or on a stand, as you prefer.

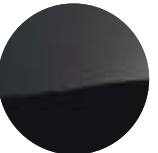



Shop No.9 , Millenium Star, Dhole Patil Road, Pune - 411001
Landline (20)-41289520 Mobile : (+91) 9607929864/66/68





- 

Flax cone
- 

Optional stand
- 

Black High Gloss finish
- 

On-wall or on-ceiling mounting
- 

Al/Mg tweeter
- 

White High Gloss finish



— FOCAL — DÔME FLAX



Shop No.9 , Millenium Star, Dhole Patil Road, Pune - 411001
Landline (20)-41289520 Mobile : (+91) 9607929864/66/68



DÔME FLAX

Type	2-way compact sealed speaker
Speaker drivers	<ul style="list-style-type: none"> • 4" (10cm) Flax Mid-Bass • 1" (25mm) Al/Mg inverted dome tweeter
Frequency response	80Hz - 28kHz
Sensitivity (2.83V/1m)	88dB
Nominal impedance	8Ω
Recommended amp power	25 - 100W
Dimensions (HxWxD)	6 ^{3/4} x 5 ^{11/16} x 5 ^{5/8} " (172 x 144 x 143mm)
Finishes	● ○
Weight	4.19lbs (1.9kg)



PACK DÔME FLAX 5.1

5 x Dôme Flax
1 x Sub Air



Stands sold separately.

DÔME STAND



Shop No.9 , Millenium Star, Dhole Patil Road, Pune - 411001
Landline (20)-41289520 Mobile : (+91) 9607929864/66/68

05.

SIB EVO

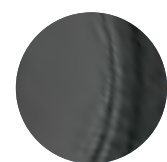
At the heart of the action

The range comprises one traditional loudspeaker, the Sib Evo, a second Sib Evo Dolby Atmos® model equipped with a specific speaker driver on top, and an active subwoofer, the Cub Evo. These satellite loudspeakers combine front and vertical diffusion thanks to the Dolby Atmos® effects created. The sound waves are projected onto the ceiling and is then reflected back to the listener for an immersive experience.



Shop No.9 , Millenium Star, Dhole Patil Road, Pune - 411001
 Landline (20)-41289520 Mobile : (+91) 9607929864/66/68





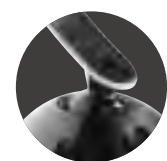
Polyflex speaker driver



Dolby Atmos® effects



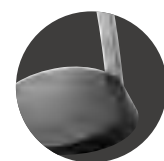
Compact loudspeaker



Optional wall attachment



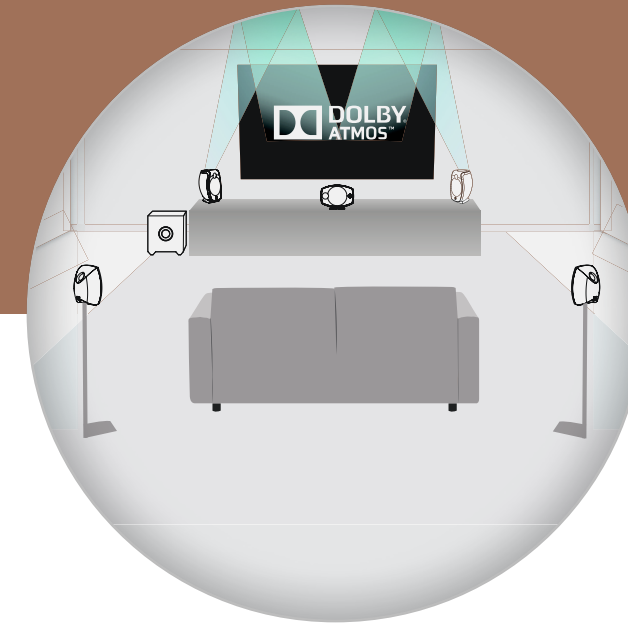
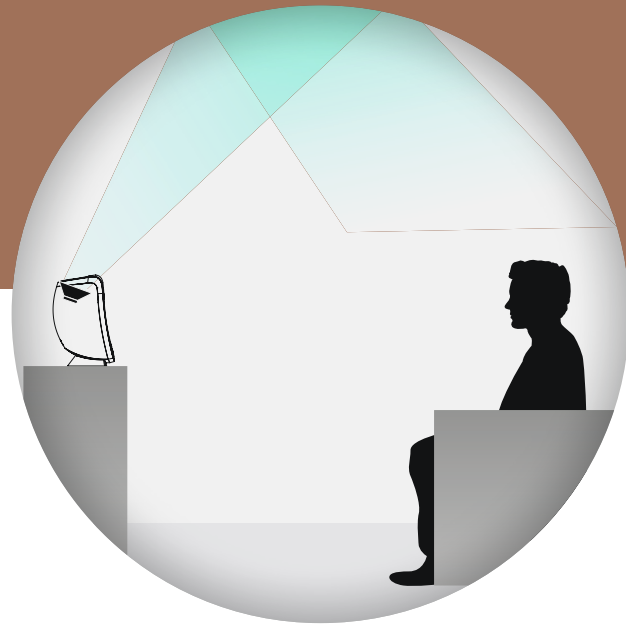
Black finish



Optional stands



Shop No.9 , Millenium Star, Dhole Patil Road, Pune - 411001
Landline (20)-41289520 Mobile : (+91) 9607929864/66/68



Dolby Atmos

Dolby Atmos® technology offers a cinema experience by creating powerful sound effects. You will find yourself at the heart of the action, music and dialogue of the films you watch, plunged into a 3D space of captivating realism. The Sib Evo loudspeakers equipped with Dolby Atmos® technology are called enabled speakers. In addition to the vertical speaker driver, a second is installed on the upper surface of the loudspeaker and directs the sound towards the ceiling at a carefully calculated angle, so that the signal is reflected around the entire room. The sound comes simultaneously from the front, back, sides and above.

EFFECTS

Dolby Atmos® technology isolates each sound from the original soundtrack and mix as an independent audio object. Imagine a scene in a house: you hear the conversations, the footsteps in the neighbouring room, sounds coming through the open window, all at the same time and spatialised in 3D, as though you were actually there... Dolby Atmos® comes into its own in scenes where the effects are vertical: a plane or helicopter passing overhead, a thunderstorm, pounding rain, etc. The Sib Evo 5.1.2 pack offers exceptional sound effects and adds a new dimension to films.



Shop No.9 , Millenium Star, Dhole Patil Road, Pune - 411001
Landline (20)-41289520 Mobile : (+91) 9607929864/66/68



www.allhomeliving.com



SIB EVO DOLBY ATMOS®

Type	<ul style="list-style-type: none"> • Front channel: Two-way bass-reflex loudspeaker • Atmos® channel: Full-range sealed loudspeaker 	SIB EVO	Two-way compact bass-reflex loudspeaker
Speaker drivers	<ul style="list-style-type: none"> • Front channel: 5" (13cm) Polyflex Woofer • ¾" (19mm) soft dome tweeter • Atmos® Channel: 4" (10cm) full-range speaker 		<ul style="list-style-type: none"> • 5" (13cm) Polyflex Woofer • ¾" (19mm) soft dome tweeter
Frequency response	<ul style="list-style-type: none"> • Front channel: 65Hz to 25kHz • Atmos® Channel: 90Hz to 20kHz 		70Hz to 25kHz
Sensitivity (2.83V/1m)	90dB		90dB
Nominal impedance	6Ω		6Ω
Recommended amp power	25 - 200W		25 - 200W
Dimensions (HxWxD)	11 ⁵ / ₈ x 7 ¹ / ₁₆ x 7 ¹ / ₂ " (295 x 195 x 190mm)		9 ¹⁵ / ₁₆ x 6 ³ / ₈ x 6 ³ / ₈ " (252 x 162 x 162mm)
Weight	7lbs (3.25kg)		4lbs (1.8kg)



PACK SIB EVO DOLBY ATMOS® 5.1.2

- 5 x Sib Evo
- 2 x Sib Evo Dolby Atmos®
- 1 x Cub Evo



PACK SIB EVO 5.1

- 5 x Sib Evo
- 1 x Cub Evo



Wall attachment supplied with 5.1 and 5.1.2 packs.

WALL ATTACHMENT



Hip Evo stands sold as optional extra.

HIP EVO STANDS



Shop No.9 , Millenium Star, Dhole Patil Road, Pune - 411001
Landline (20)-41289520 Mobile : (+91) 9607929864/66/68

09. UNITI

Amplify your emotions

The Uniti range from Naim Audio comprises all-in-one players that work individually or in combination with other devices. Simply add loudspeakers to allow your music to express itself fully in any room in your home. Assembled by hand by the Naim experts in their Salisbury workshops in England, these sleek and compact players offer a deep and immersive sound.

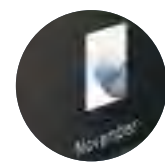


Shop No.9 , Millenium Star, Dhole Patil Road, Pune - 411001
Landline (20)-41289520 Mobile : (+91) 9607929864/66/68

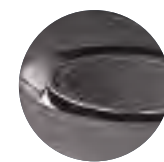




Multiroom
Naim app



Glass LCD
colour screen



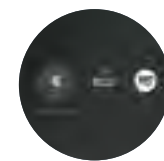
Sleek volume
wheel



Brushed
Aluminium



High-resolution
streaming



Multiple
sources



Shop No.9 , Millenium Star, Dhole Patil Road, Pune - 411001
Landline (20)-41289520 Mobile : (+91) 9607929864/66/68



	UNITI NOVA	UNITI STAR
Type	All-in-one music streaming player	All-in-one music streaming player
Streaming	Streaming: Apple AirPlay 2, Chromecast Built-in, UPnP/PTM, Spotify® Connect, TIDAL, Roon Ready, Bluetooth, Internet Radio, Qobuz	Streaming: Apple AirPlay 2, Chromecast Built-in, UPnP/PTM, Spotify® Connect, TIDAL, Roon Ready, Bluetooth, Internet Radio, Qobuz
Audio Inputs	<ul style="list-style-type: none"> • 2 x Optical TOSLink (up to 24bit/96kHz) • 2 x Coaxial RCA (up to 24bit/192kHz, DoP 64Fs) • 1 x BNC (up to 192kHz, DoP 64Fs) • 1 x HDMI ARC • 2 x RCA • 2 x 5-pin DIN • 2 x USB Type A socket (front and rear) • 1 x SD card 	<ul style="list-style-type: none"> • 2 x Optical TOSLink (up to 24bit/96kHz) • 2 x Coaxial RCA (up to 24bit/192kHz, DoP 64Fs) • 1 x BNC (up to 192kHz, DoP 64Fs) • 1 x HDMI ARC • 1 x RCA • 1 x 5-pin DIN • 2 x USB Type A socket (front and rear) • 1 x SD card
Audio Outputs	<ul style="list-style-type: none"> • 1 x Stereo power amplifier • 1 x RCA sub/pre output • 1 x 3.5mm headphone jack 	<ul style="list-style-type: none"> • 1 x Stereo power amplifier • 1 x RCA sub/pre output • 1 x 3.5mm headphone jack
Digital	<ul style="list-style-type: none"> • 2 x Optical TOSLink (up to 24bit/96kHz) • 2 x Coaxial RCA (up to 24bit/192kHz, DoP 64Fs) • 1 x HDMI ARC 	<ul style="list-style-type: none"> • 2 x Optical TOSLink (up to 24bit/96kHz) • 2 x Coaxial RCA (up to 24bit/192kHz, DoP 64Fs) • 1 x BNC (up to 192kHz, DoP 64Fs) • 1 x HDMI ARC
USB	2 x USB Type A Socket (front and rear)	2 x USB Type A Socket (front and rear)
Multiroom	Sync up to five Naim Streaming products and control via the Naim App	Sync up to five Naim Streaming products and control via the Naim App
Amplifier Output	80W per channel into 8Ω	70W per channel into 8Ω
Dimensions (HxWxD)	95 x 432 x 265mm	95 x 432 x 265mm
Weight	28.7lbs (13kg)	26.5lbs (12kg)

	UNITI ATOM
Type	All-in-one music streaming player
Streaming	Streaming: Apple AirPlay 2, Chromecast Built-in, UPnP/PTM, Spotify® Connect, TIDAL, Roon Ready, Bluetooth, Internet Radio, Qobuz
Audio Inputs	<ul style="list-style-type: none"> • 2 x Optical TOSLink (up to 24bit/96kHz) • 1 x Coaxial RCA (up to 24bit/192kHz, DoP 64Fs) • 1 x HDMI ARC • 1 x RCA • 2 x USB Type A socket (front and rear)
Audio Outputs	<ul style="list-style-type: none"> • 1 x Stereo power amplifier • 1 x RCA sub/pre output • 1 x 3.5mm headphone jack
Digital	<ul style="list-style-type: none"> • 2 x Optical TOSLink (up to 24bit/96kHz) • 1 x Coaxial RCA (up to 24bit/192kHz, DoP 64Fs) • 1 x HDMI ARC
USB	2 x USB Type A Socket (front and rear)
Multiroom	Sync up to five Naim Streaming products and control via the Naim App
Amplifier Output	40W per channel into 8Ω
Dimensions (HxWxD)	95 x 245 x 265mm
Weight	15.45lbs (7kg)



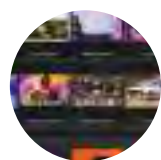
Shop No.9 , Millenium Star, Dhole Patil Road, Pune - 411001
 Landline (20)-41289520 Mobile : (+91) 9607929864/66/68

10. MU-SO

Excellence remastered

The Mu-so 2nd Generation family from Naim Audio are wireless all-in-one systems that deliver high-resolution listening experiences, whether you want to enjoy your digital musical collection, Internet radio or streaming platforms. You will also benefit from multi-room installation options, multiple features and, of course, musical power delivered by their Focal-optimised speaker drivers.





Integrated streaming services



Multi-room application



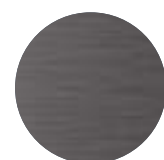
Black or coloured grille



Aluminium heatsink



Control crown



Brushed Aluminium finish



Shop No.9 , Millenium Star, Dhole Patil Road, Pune - 411001
Landline (20)-41289520 Mobile : (+91) 9607929864/66/68



	MU-SO 2 ND GENERATION	MU-SO QB 2 ND GENERATION
Type	3-way stereo connected speaker Optimised acoustic system DSP in ventilated cabinet	3-way stereo connected compact speaker Optimised acoustic system DSP with dual passive heatsink
HDMI	ARC et CEC	-
Streaming	Apple AirPlay 2, Chromecast Built-in, UPnP/PTM, Spotify® Connect, TIDAL, Roon Ready, Bluetooth, Internet Radio, Qobuz	Apple AirPlay 2, Chromecast Built-in, UPnP/PTM, Spotify® Connect, TIDAL, Roon Ready, Bluetooth, Internet Radio, Qobuz
Audio Inputs		
Analogue	3.5mm Jack	3.5mm Jack
USB	USB2 (Type A connector)	USB 2 (Type A connector)
Digital	S/PDIF	S/PDIF
Optical	S/PDIF up to 96kHz	S/PDIF up to 96kHz
Finishes	Burnished and anodised aluminium casework, CNC milled, bead blasted and anodised aluminium heatsinks, dual-tone grey and black fabric grille	Burnished and anodised aluminium casework, CNC milled, bead blasted and anodised aluminium heatsinks, dual-tone grey and black fabric grille
Power	Amplifier Output 450W - (6 x 75W)	Amplifier Output 300W - (4 x 50W, 1 x 100W)
Dimensions (HxWxD)	122 x 628 x 264mm	210 x 218 x 212mm
Weight	24.7lbs (11.2kg)	12.35lbs (5.6kg)

MU-SO WOOD EDITION

MU-SO FOR BENTLEY SPECIAL EDITION



Black



Peacock



Terracotta



Olive

Compatible with the standard edition

MU-SO GRILLE

Compatible with the standard edition

MU-SO QB GRILLE

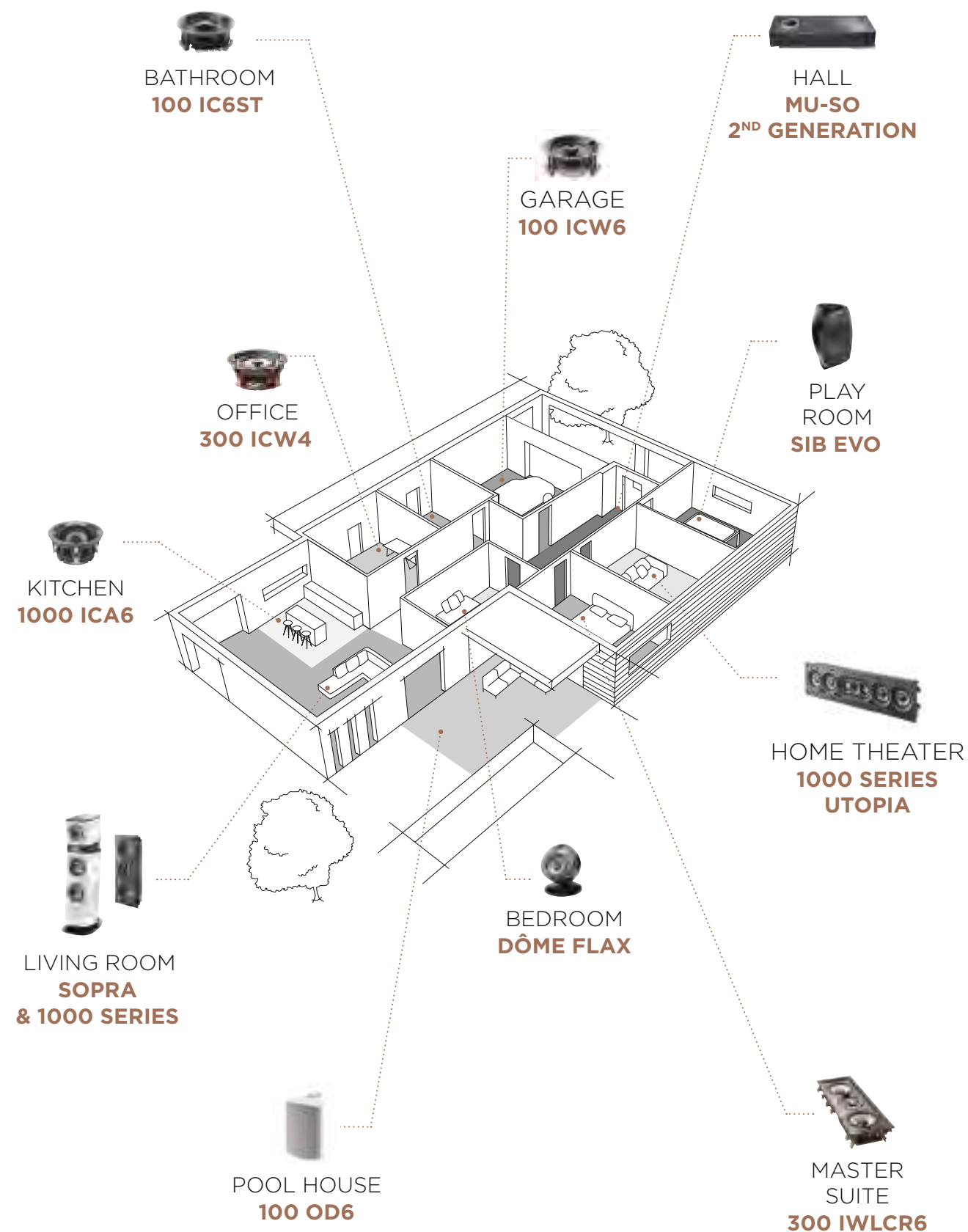


Shop No.9 , Millenium Star, Dhole Patil Road, Pune - 411001
Landline (20)-41289520 Mobile : (+91) 9607929864/66/68



NAIM APP

Available on iOS and Android, the simple yet sophisticated Naim App lets you easily control and organise your audio experience across all connected Naim products. Play music in any or every room, adjust the volume, choose your tracks, browse album covers, create playlists, save your favourite radio stations, and much more.



Shop No.9 , Millenium Star, Dhole Patil Road, Pune - 411001
 Landline (20)-41289520 Mobile : (+91) 9607929864/66/68



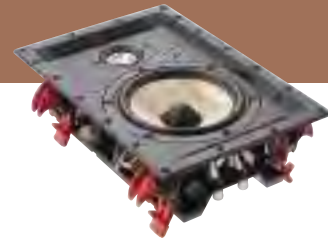
1000 SERIES

'The 1000 Series goes even further in terms of acoustic performance and integration possibilities'

RESIDENTIAL TECH

'Stunning new flagship CI speaker range combines class-leading performance, unique technologies and extreme flexibility, for the ultimate integration experience'

HOME THEATER HIFI



300 SERIES



'Among the easiest to fit in-ceiling loudspeakers on the market'

HOME CINEMA CHOICE

'Reference-grade sound from an in-wall speaker'

AUDIOHOLICS

'My day-to-day music listening and home theater system, without regret'

HOME THEATER



100 SERIES

'The sound is rich, the soundscape large and there is more than enough bass in them'

L&B TECH REVIEWS

'Focal's 100 ICLCR5 is a rare exception of an in-ceiling speaker that does a great job reproducing your home theater's front soundstage'

CRUTCHFIELD



ASTRAL 16



'An experience that was spine-tingling'

HOME CINEMA CHOICE

'This is high-end hardware fit for the finest of setups'

AVTECH MEDIA



Shop No.9 , Millenium Star, Dhole Patil Road, Pune - 411001
Landline (20)-41289520 Mobile : (+91) 9607929864/66/68



www.allhomeliving.com



DÔME FLAX

'Focal's Dôme Flax sound great anywhere'

DIGITAL TRENDS

'A lovely soundstage, fantastic neutrality, and great detail'

RESIDENTIAL SYSTEMS

'High-quality, ultra-compact, satellite style loudspeakers'

TRUSTED REVIEWS



SIB EVO

'An excellent immersive audio experience'

AVFORUMS



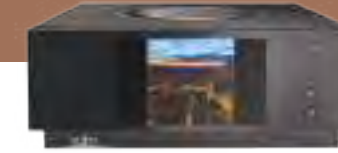
'Good clarity and excellent surround integration'

CNET



'Great solution for those looking for effective Dolby Atmos®'

TRUSTED REVIEWS



UNITI

'Naim's latest Uniti range has been a smash hit'

WHAT HI-FI



'Among a constellation of competitors, the Naim Uniti Nova is a shining star'

ROBB REPORT



'Pretty perfect. Cements Naim's reputation as the Aston Martin of the audio world'

FORBES



MU-SO

'Looking for a wireless loudspeaker system that delivers superb sound quality and design? Your search ends with the Naim Mu-so 2nd Generation Wood Edition'

ECOUSTICS



'Comfortably the best all-in one we looked at this year'

AV FORUMS



'Put simply, it's difficult to go back to any other wireless speaker after trying the QB'

THE INDEPENDANT



Shop No.9 , Millenium Star, Dhole Patil Road, Pune - 411001
Landline (20)-41289520 Mobile : (+91) 9607929864/66/68



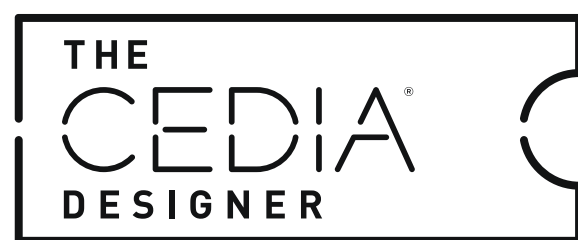
www.allhomeliving.com

CI EXPERT OFFICIAL PARTNER

So you can optimise the full potential of our 1000 Series, our dedicated retailer network is on hand to listen to your requirements. These specialist teams are trained in Focal products and can assist you with any questions you may have. Our installers also have priority access to global The CEDIA Designer software to accurately design your installation and offer a bespoke service.



Shop No.9 , Millenium Star, Dhole Patil Road, Pune - 411001
Landline (20)-41289520 Mobile : (+91) 9607929864/66/68



Create your Home Cinema

The Focal Integration products are available on The CEDIA Designer (TCD) global database. This interactive cloud software pulls together the entire design process of an outstanding Home Cinema system. Based on the size of your room, it specifies the exact placement of the loudspeakers, screen, seats and projector. It details requirements in terms of amplification and much more.



Shop No.9 , Millenium Star, Dhole Patil Road, Pune - 411001
Landline (20)-41289520 Mobile : (+91) 9607929864/66/68



COLLECTIONS

Combining performance and design, Focal's collections are a revelation, awakening the emotions through a supreme listening experience. And it doesn't matter where you are. At home with traditional and in-wall / in-ceiling loudspeakers, Home Cinema systems and open-back headphones; on the go with closed-back headphones and in-car kits; in the studio with professional monitors; and even at sea with specialist yacht solutions.



Home Collection



Motorities Collection



Professional Collection



Shop No.9 , Millenium Star, Dhole Patil Road, Pune - 411001
Landline (20)-41289520 Mobile : (+91) 9607929864/66/68

FOCAL *Powered by* naim

Enjoy an incredible sound experience

Find our products in 10,000 retail partner stores across the world, but also in our Focal Powered by Naim shops. These shops, dedicated to our brands, invite you to dive into our world, our savoir-faire and immerse yourself in the Focal & Naim sound.

AUSTRALIA
Adelaide - Melbourne -
Perth - Sydney

CZECH REPUBLIC
Prague

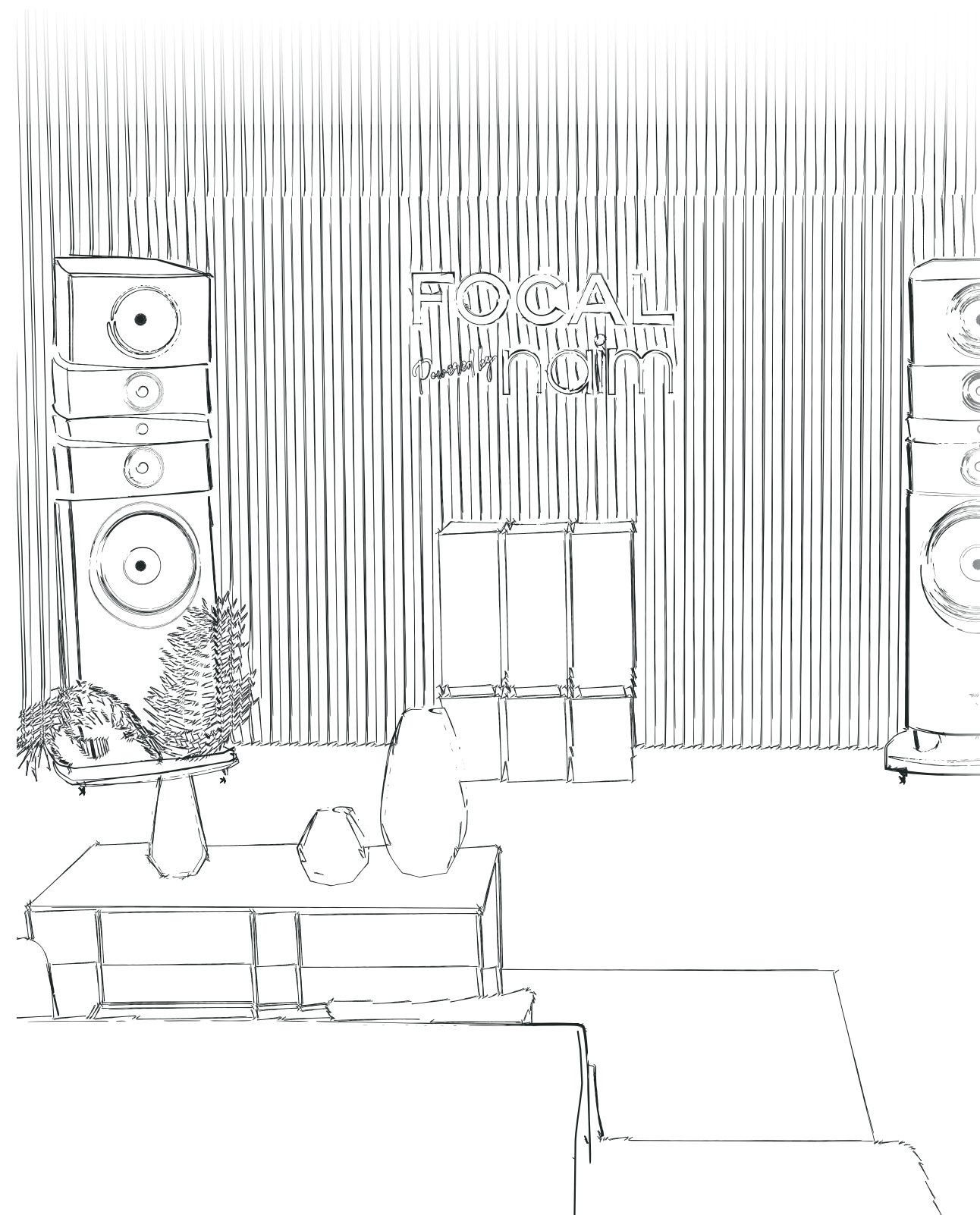
SOUTH KOREA
Seoul Gangnam-gu -
Seoul Hanam

CHINA
Guangzhou

FRANCE
Cannes - Lyon - Perpignan

USA
Dallas - Houston - Miami

GERMANY
Berlin



Shop No.9 , Millenium Star, Dhole Patil Road, Pune - 411001
Landline (20)-41289520 Mobile : (+91) 9607929864/66/68



For more information, scan the QR code
or find us at:

www.focal.com



Shop No.9 , Millenium Star, Dhole Patil Road, Pune - 411001
Landline (20)-41289520 Mobile : (+91) 9607929864/66/68



Shop No.9 , Millenium Star, Dhole Patil Road, Pune - 411001
Landline (20)-41289520 Mobile : (+91) 9607929864/66/68

Focal JMLab®

BP 374 - 108, rue de l'Avenir - 42353 La Talaudière cedex - France - +33 (0) 477 435 700

Focal® is a registered trademark of Focal JMLab®, Naim® is a registered trademark of Naim Audio®.

Due to constant technological advances, Focal JMLab® and Naim Audio® reserve the right to modify prices and specifications without notice.

Non-binding pictures. Pictures : L'Atelier Sylvain Madelon / Envato Elements. SCAA/25/06/2021 - v1



3 544059 825537